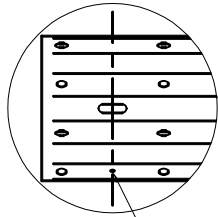
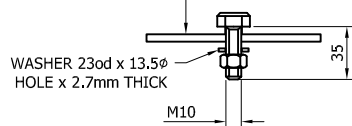


SR600 - 2mm BEAM

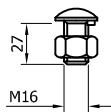


NOTE: THIS HOLE IDENTIFIES THE REQUIRED ORIENTATION OF THE BEAM AND THE BEAM END WITH THE ADDITIONAL HOLE SHOULD BE SITED AS THE REAR BEAM AT LAP JOINTS

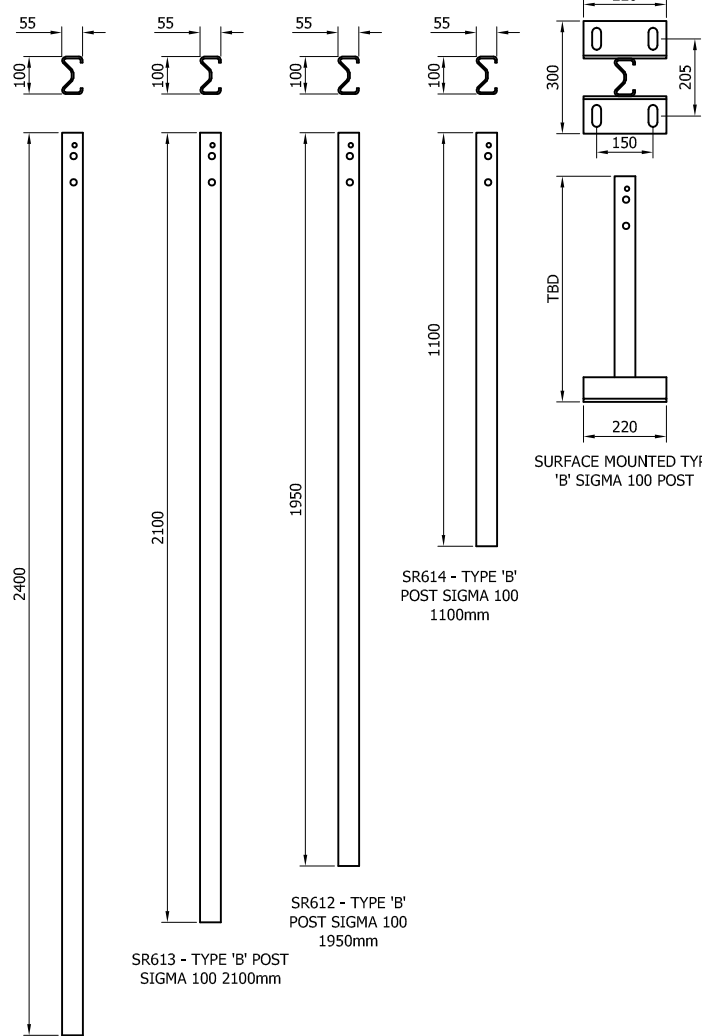
WASHER PLATE 115x40x5



SR632 - BOLT 4.6 M10x35 c/w NUT, WASHER AND WASHER PLATE



SR635 - SETSCREW 4.6 LIP M16x27 c/w FLANGE NUT

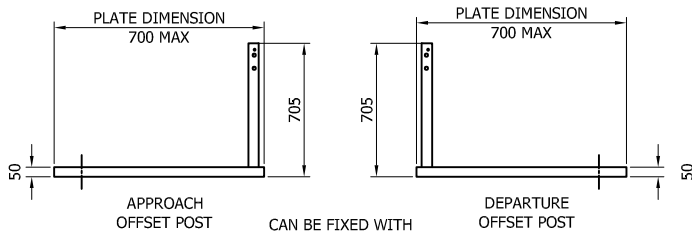


SR609 - TYPE 'B' POST SIGMA 100 2400mm

SR613 - TYPE 'B' POST SIGMA 100 2100mm

SR612 - TYPE 'B' POST SIGMA 100 1950mm

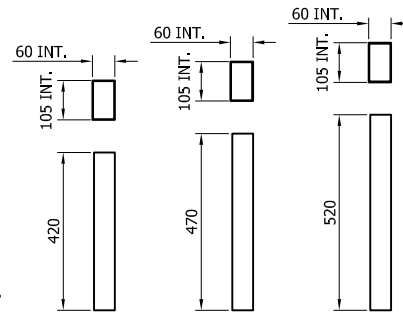
SR614 - TYPE 'B' POST SIGMA 100 1100mm



CAN BE FIXED WITH CAST IN ANCHORS, DRILL AND FIX ANCHORS OR PUSHED IN ANCHORS AT 180x180 CENTERS



SR100 - A21 REINFORCING RING

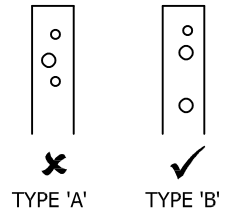


SR090 - SIGMA 100 POST SOCKET x 420

SR091 - SIGMA 100 POST SOCKET x 470

SR092 - SIGMA 100 POST SOCKET x 520

POST TOP DRILLING ARRANGEMENT



REV#	DATE	DETAILS	INITIAL
05	12/02/19	MINOR DETAIL CHANGES AND TITLEBLOCK CHANGE	H.B
04	10/03/17	OFFSET PLATE REVISED	L.L
03	27/01/17	DETAILS REVISED	L.L
2.3	20/05/15	DETAILS REVISED	L.L

MegaRail Birsta w2 N2 A W4

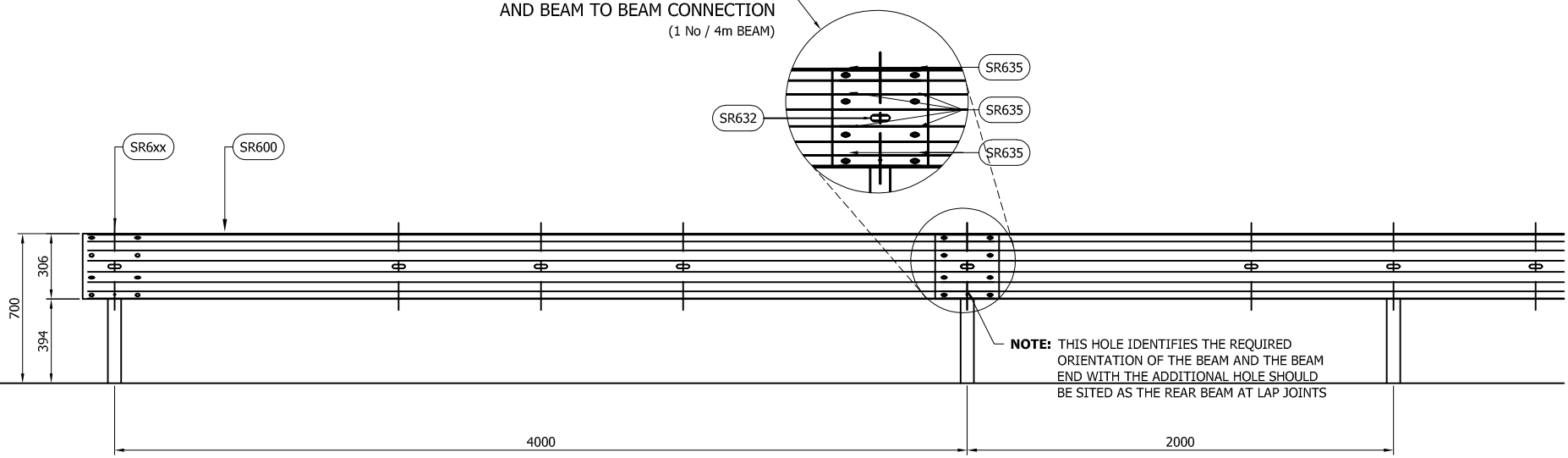
N2.W4 VEHICLE RESTRAINT SYSTEM COMPONENTS SCHEMATIC

SAFEROAD®

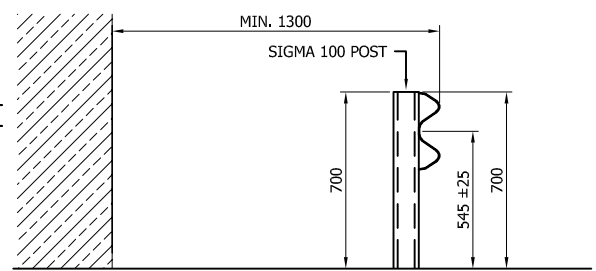
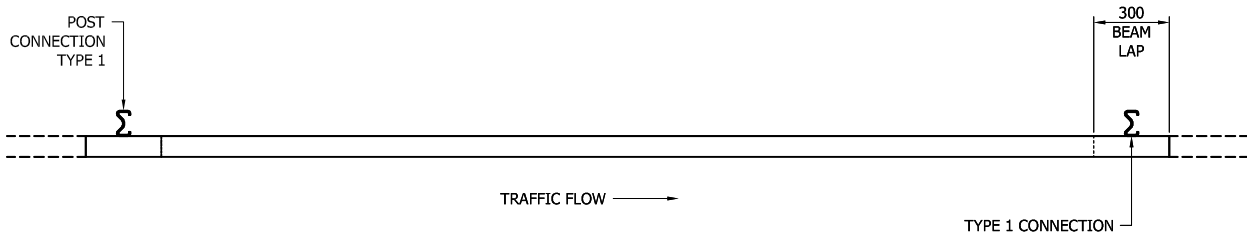
CONCORD HOUSE,
BESSEMER WAY, SCUNTHORPE,
NORTH LINCOLNSHIRE, DN15 8XE
t: 01724 289119
FOR TECHNICAL ASSISTANCE CONTACT
john.cudlipp@saferoad.co.uk

DRAWING NUMBER:	REV#:
N2W4-GA-00	05

**BEAM TO POST CONNECTION TYPE 1
AND BEAM TO BEAM CONNECTION**
(1 No / 4m BEAM)



- GENERAL NOTES:
1. POSTS ARE TO BE INSTALLED WITH THE CLOSED FACE OF THE CHANNEL TOWARDS THE ON-COMING TRAFFIC.
 2. POST CENTRES MAY BE INSTALLED AT EITHER 2m OR 4m CENTRES, AS SHOWN IN ELEVATION, TO ACCOMMODATE LOCAL OBSTRUCTIONS. THE SYSTEM SHOULD RETURN TO 4m CENTRES WITH POSTS AT THE BEAM LAP JOINTS LOCATIONS, AS PLAIN VIEW, AS SOON AS IS PRACTICAL.
 3. FOR OPTIONS ON POST FOUNDATIONS REFER TO DRAWING NUMBER MR-GA-020
 4. FOR DEVIATIONS IN SYSTEM POST PITCH REFER TO DRAWING N2W4-GA-40.
 5. WHEN TYING INTO ADJACENT VRS ONLY ONE WORKING WIDTH DIFFERENCE IS PERMITTED.
 6. WHERE A KERB IS PRESENT THE MAXIMUM KERB HEIGHT IS 100mm.
 7. FOR MINIMUM LENGTH OF FULL HEIGHT VRS REFER TO SAFEROAD MEGARAIL MANUAL.



SYSTEM COMPONENT SCHEDULE - QUANTITIES / 4m BEAM		
SAFEROAD UK PART NUMBER	DESCRIPTION	QUANTITY
SR600	BEAM "A" PROFILE 2mm	1
SEE TABLE B	POST SIGMA 100	1
FOR SCHEDULE OF BOLTED CONNECTIONS REFER TO DRAWING NUMBER MR-GA-W4-02		

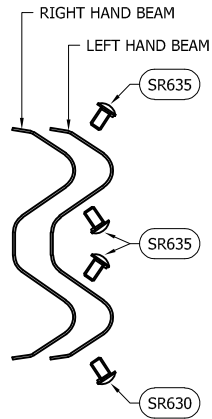
TABLE 'B' - SCHEDULE OF POST REFERENCE NUMBERS AND LENGTHS	
SAFEROAD UK PART NUMBER	POST LENGTH
SR614	1100
SR611	1700
SR612	1950
SR613	2100

REV#	DATE	DETAILS	INITIAL
04	12/02/19	MINOR DETAIL CHANGES AND TITLEBLOCK REVISIONS	H.B
03	27/01/17	DETAILS REVISED	L.L
2.3	20/05/15	DETAILS REVISED	L.L

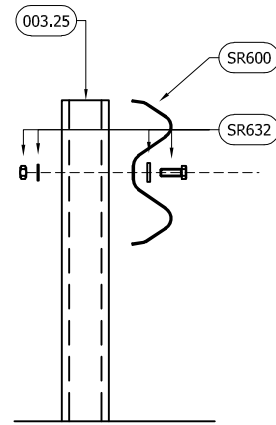
**MegaRail Birsta W2
N2 A W4**
N2.W4 VEHICLE RESRAINT SYSTEM
ASSEMBLY AND SETTING OUT
ARRANGEMENT

SAFEROAD®
CONCORD HOUSE,
BESSEMER WAY, SCUNTHORPE,
NORTH LINCOLNSHIRE, DN15 8XE
t: 01724 289119
FOR TECHNICAL ASSISTANCE CONTACT
john.cudlipp@saferoad.co.uk

DRAWING NUMBER: **N2W4-GA-01** REV#: **04**



BEAM TO BEAM LAP
CONNECTION ARRANGEMENT
(x2 LOCATIONS / BEAM END)



BEAM TO POST
CONNECTION TYPE 1

GENERAL NOTES:

- NUMBERS IN THE SCHEDULES SUFFIXED (+) DENOTES THE ADDITIONAL QUANTITY OF COMPONENTS REQUIRED FOR EXTREME ENDS OF INDIVIDUAL RUNS OF BARRIER.

BOLTING COMPONENT SCHEDULE - QUANTITIES / BEAM

BIRSTA MANUFACTURING REFERENCE	SAFEROAD UK PART NUMBER	DESCRIPTION	BEAM TO BEAM CONNECTION
1122160250	SR635	SETSCREW 4.6 LIP M16x27 c/w FLANGE NUT	8 (+8)

BOLTING COMPONENT SCHEDULE - QUANTITIES / POST

OUTIMEX MANUFACTURING REFERENCE	SAFEROAD UK PART NUMBER	DESCRIPTION	TYPE 1 CONNECTION
1128121150A	SR632	BOLT 4.8 M10x35 c/w NUT, WASHER 11Ø HOLE AND WASHER PLATE 115 x 40 x 5mm	1
QUANTITY OF CONNECTION TYPES / 4m BEAM			1 (+1)

** BEAM REFERENCES i.e. LEFT / RIGHT HAND ARE FOR VERGE INSTALLATIONS; FOR CENTRAL RESERVATION INSTALLATIONS THE REFERENCES ARE REVERSED

REV#	DATE	DETAILS	INITIAL
04	12/02/19	TITLEBLOCK CHANGES	H.B
03	27/01/17	DETAILS REVISED	L.L
2.4	20/05/15	DETAILS REVISED	L.L

MegaRail Birsta w2 N2 A W4

N2.W4 VEHICLE RESTRAINT SYSTEM
BOLTING ARRANGEMENTS

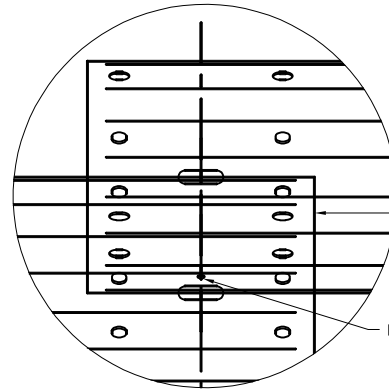
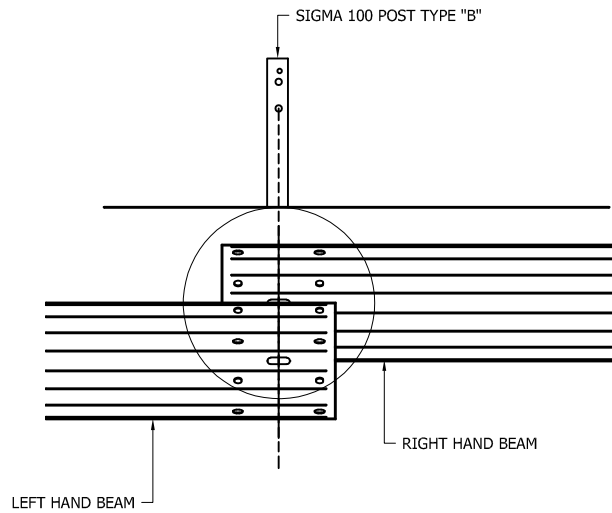
SAFEROAD®

CONCORD HOUSE,
BESSEMER WAY, SCUNTHORPE,
NORTH LINCOLNSHIRE, DN15 8XE
t: 01724 289119
FOR TECHNICAL ASSISTANCE CONTACT
john.cudlipp@saferoad.co.uk

DRAWING NUMBER:	REV#:
N2W4-GA-02	04

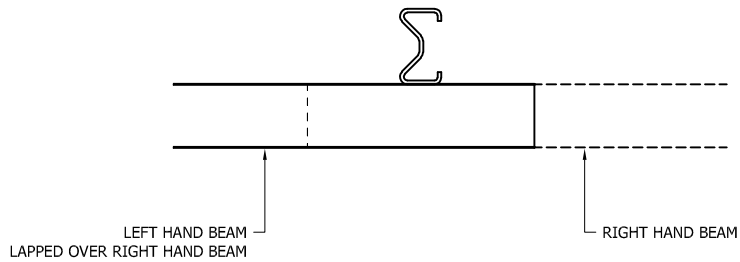
GENERAL NOTES:

1. POSTS ARE TO BE INSTALLED WITH THE CLOSED FACE OF THE CHANNEL TOWARDS THE ON-COMING TRAFFIC.



NOTE: THIS HOLE IDENTIFIES THE REQUIRED ORIENTATION OF THE BEAM AND THE BEAM END WITH THE ADDITIONAL HOLE SHOULD BE SITED AS THE REAR BEAM AT LAP JOINTS

TRAFFIC FLOW →



REV#	DATE	DETAILS	INITIAL
04	12/02/19	TITLEBLOCK CHANGES	H.B
03	27/01/17	DETAILS REVISED	L.L
2.3	20/05/15	DETAILS REVISED	L.L

MegaRail Birsta w2 N2 A W4

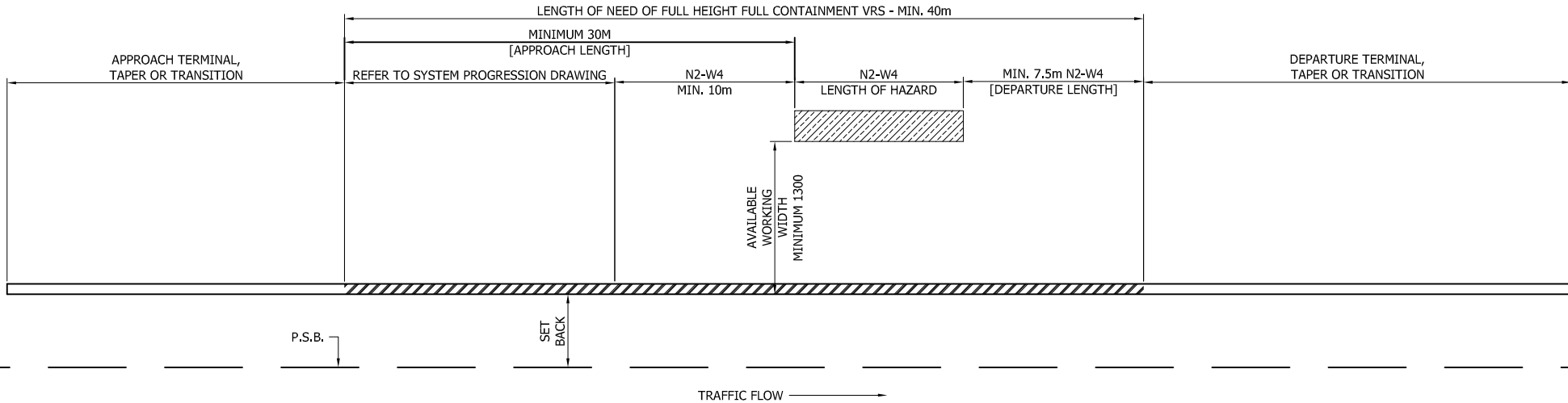
N2.W4 VEHICLE RESTRAINT SYSTEM.
BEAM LAPPING DETAIL FOR W4
MEGARAIL SYSTEM

SAFEROAD®

CONCORD HOUSE,
BESSEMER WAY, SCUNTHORPE,
NORTH LINCOLNSHIRE, DN15 8XE
t: 01724 289119
FOR TECHNICAL ASSISTANCE CONTACT
john.cudlipp@saferoad.co.uk

DRAWING NUMBER:	REV#:
N2W4-GA-03	04

- GENERAL NOTES:
1. P.S.B. = POINT FROM WHERE SET-BACK IS MEASURED.
 2. POSTS ARE TO BE INSTALLED WITH THE CLOSED FACE OF THE CHANNEL TOWARDS THE ON-COMING TRAFFIC.
 3. MINIMUM LENGTH OF FULL HEIGHT VRS IS 40m



MegaRail Birsta W2 N2 A W4

VEHICLE RESTRAINT SYSTEM.
SYSTEM PROGRESSION SCHEMATIC
FOR N2.W4 PROTECTION TO HAZARD

SAFEROAD®

CONCORD HOUSE,
BESSEMER WAY, SCUNTHORPE,
NORTH LINCOLNSHIRE, DN15 8XE
t: 01724 289119

FOR TECHNICAL ASSISTANCE CONTACT
john.cudlipp@saferoad.co.uk

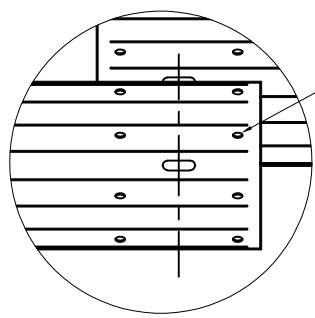
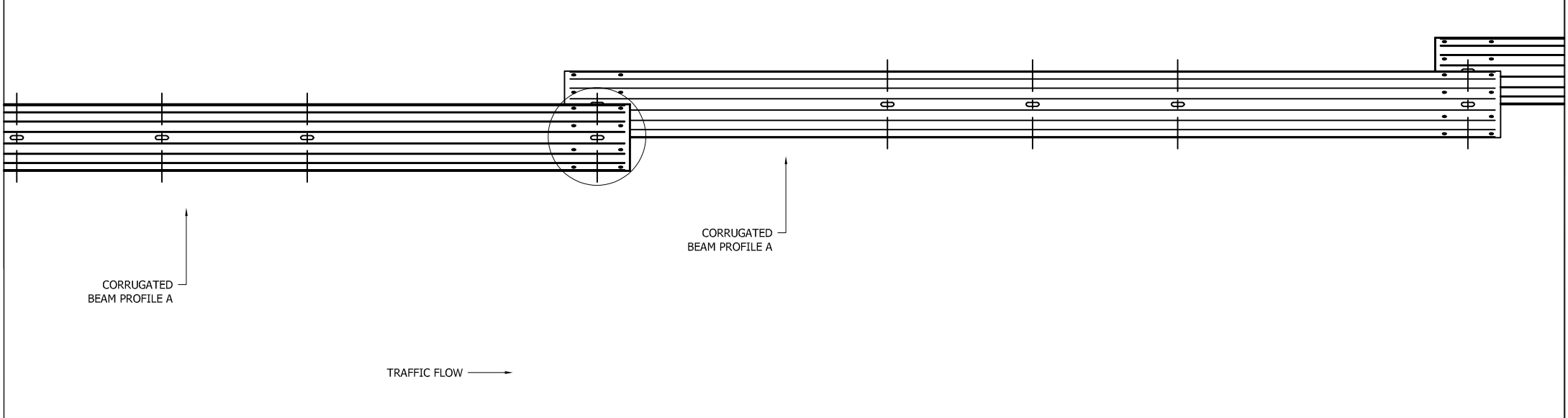
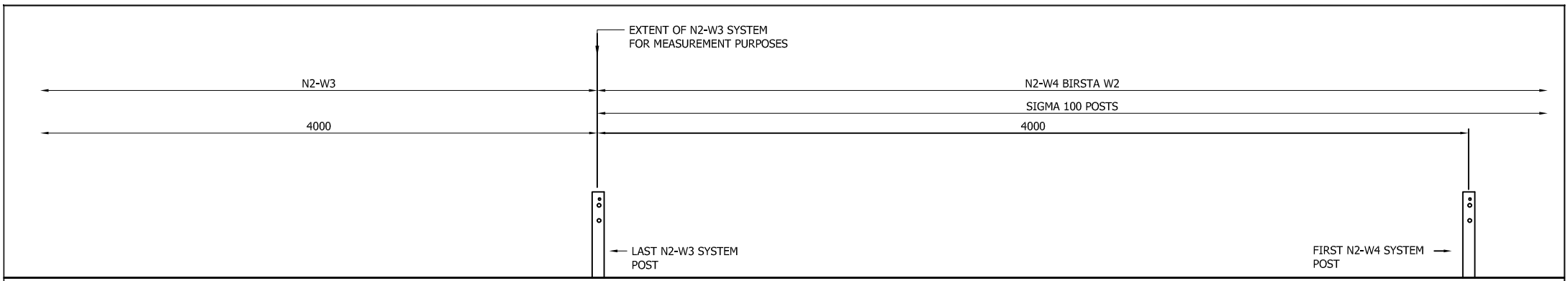
REV#	DATE	DETAILS	INITIAL
04	12/02/19	TITLEBLOCK CHANGES	H.B
03	27/01/17	DETAILS REVISED	L.L
2.3	20/05/15	DETAILS REVISED	L.L

DRAWING NUMBER:

N2W4-GA-10

REV#:

04



NOTE: BEAM ORIENTATION CIRCULAR HOLES TO BEAM APPROACH END

GENERAL NOTES:
 1. POSTS ARE TO BE INSTALLED WITH THE CLOSED FACE OF THE CHANNEL TOWARDS THE ON-COMING TRAFFIC.

**MegaRail Birsta W2
 N2 A W4**
 VEHICLE RESTRAINT SYSTEM.
 N2 W4 INTO N2 W3 SYSTEM
 PROGRESSION CONNECTION DETAIL

SAFEROAD®
 CONCORD HOUSE,
 BESSEMER WAY, SCUNTHORPE,
 NORTH LINCOLNSHIRE, DN15 8XE
 t: 01724 289119
 FOR TECHNICAL ASSISTANCE CONTACT
 john.cudlipp@saferoad.co.uk

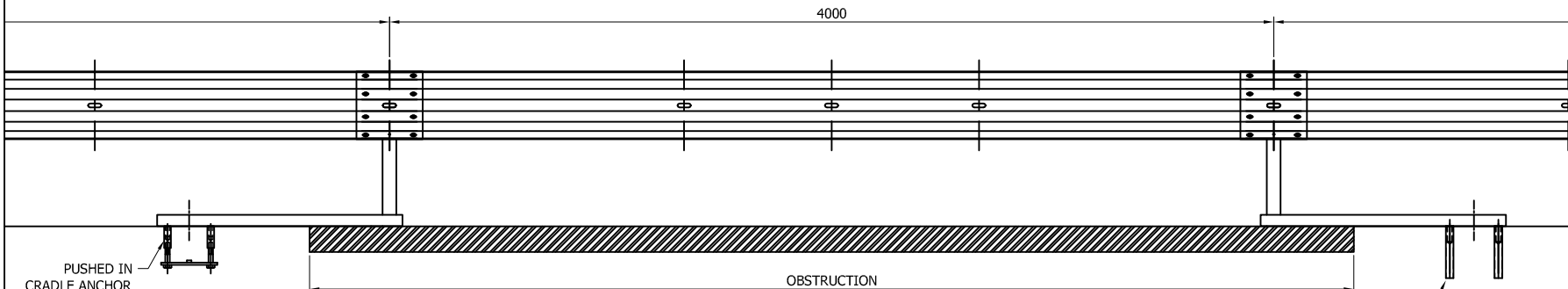
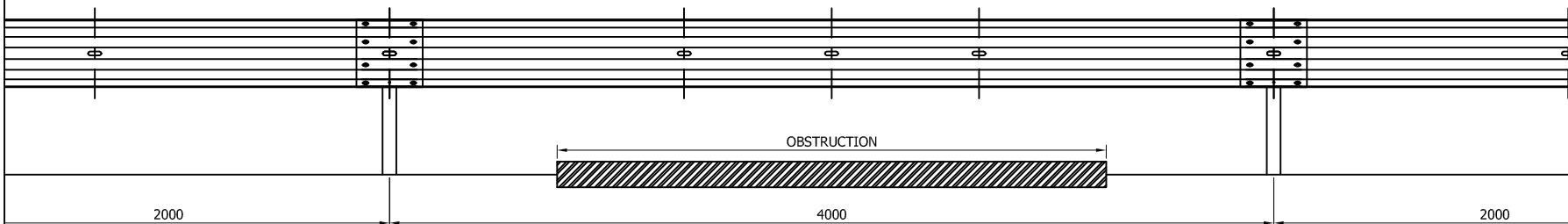
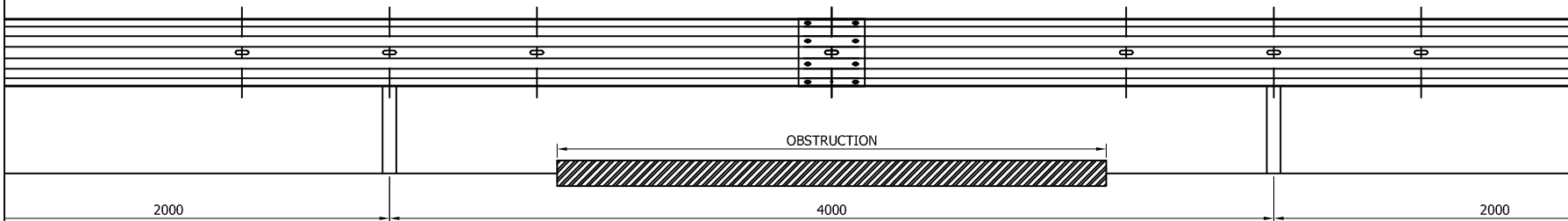
REV#	DATE	DETAILS	INITIAL
03	01/04/19	TITLEBLOCK REVISED	M.T
02	12/02/19	TITLEBLOCK CHANGES	H.B
01	10/03/17	POST DETAIL REVISED	L.L
00	27/01/17	NEW DRAWING	L.L

DRAWING NUMBER: **N2W4-GA-20** REV#: **03**

** BEAM REFERENCES I.e. LEFT / RIGHT HAND ARE FOR VERGE INSTALLATIONS; FOR CENTRAL RESERVATION INSTALLATIONS THE REFERENCES ARE REVERSED

GENERAL NOTES:

1. IF THE SITE CONDITIONS DO NOT ALLOW A POST TO BE INSTALLED ON THE SYSTEM PITCH DEVIATIONS CAN BE APPLIED. THE OBSTRUCTED POST CAN BE LEFT OUT AND EXTRA POSTS INSTALLED TO SPAN THE OBSTRUCTION AS PER THIS DRAWING. ALTHOUGH IT WOULD BE BENEFICIAL TO USE THE HOLES ALREADY IN THE BEAM IT IS ACCEPTABLE TO DRILL NEW HOLES IN THE DESIRED POSITIONS AND TREAT WITH ZINC RICH PAINT.
2. OFFSET POSTS SHOWN ON DRAWING N2W4-GA-00 CAN BE USED.



PUSHED IN CRADLE ANCHOR

DRILL & FIX OR PUSHED IN ANCHOR

MegaRail Birsta W2 N2 A W4

N2.W4 VEHICLE RESTRAINT SYSTEM
DEVIATION SETTING OUT
ARRANGEMENT

SAFEROAD®

CONCORD HOUSE,
BESSEMER WAY, SCUNTHORPE,
NORTH LINCOLNSHIRE, DN15 8XE
t: 01724 289119
FOR TECHNICAL ASSISTANCE CONTACT
john.cudlipp@saferoad.co.uk

REV#	DATE	DETAILS	INITIAL
01	12/02/19	TITLEBLOCK CHANGES	H.B
00	27/01/17	NEW DRAWING	L.L

DRAWING NUMBER:	REV#:
N2W4-GA-40	01