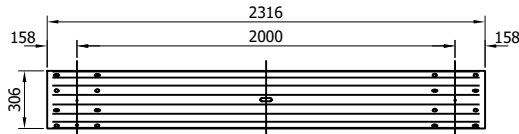
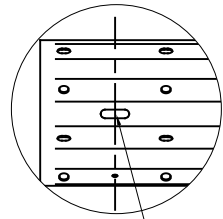


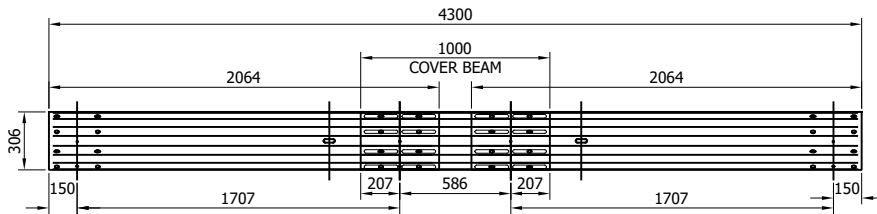
SR700 - VIK "A" PROFILE BEAM 3mm THK  
4316mm LONG BEAM



VIK "A" PROFILE BEAM 3mm THK  
2316mm LONG BEAM

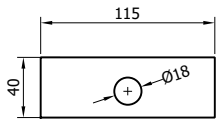


**NOTE:** THIS HOLE IDENTIFIES THE REQUIRED ORIENTATION OF THE BEAM AND THE BEAM END WITH THE ADDITIONAL HOLE SHOULD BE SITED AS THE REAR BEAM AT LAP JOINTS

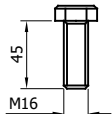


SR023 - 016.40 EXPANSION "A" PROFILE BEAM

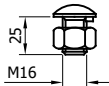
EXPANSION BEAMS ARE DELIVERED FACTORY ASSEMBLED. IF CIRCUMSTANCES DICTATE ON SITE ASSEMBLY PLEASE FOLLOW THE FOLLOWING GUIDANCE:  
INSIDE NUT TIGHTENED TO 15Nm OUTSIDE LOCKING NUT TIGHTENED TO 70Nm.  
NOTE: IT IS VERY IMPORTANT TO HOLD INSIDE NUT WITH A SPANNER WHEN APPLYING THE TORQUE WRENCH TO THE OUTSIDE NUT.



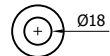
SR741 - WASHER PLATE  
115 x 40 x 5 DIA. 18



SR740 - SETSCREW 8.8  
M16x45



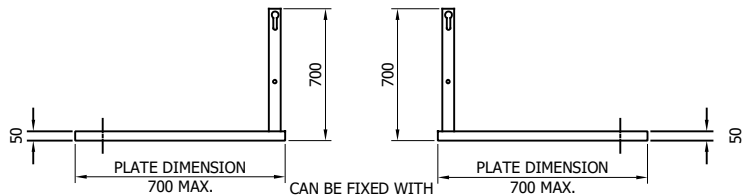
SR730 - SETSCREW 4.6 LIP  
M16x25 c/w FLANGE NUT



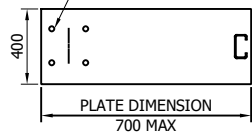
SR742 - WASHER  
M16



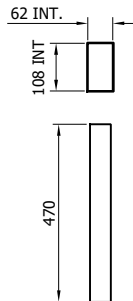
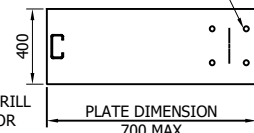
SR743 - HEXAGON  
NUT M16



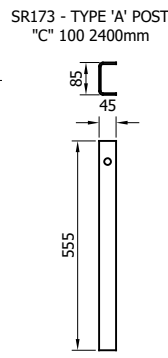
CAN BE FIXED WITH CAST IN ANCHORS, DRILL AND FIX ANCHORS OR PUSHED IN ANCHORS AT 180x180 CENTERS



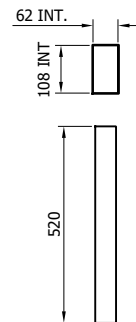
\*BASEPLATE DRILL & TAPPED FOR LIFTING EYE



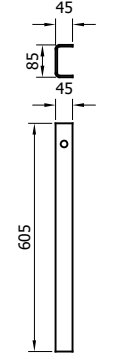
SR180 - C-100  
POST SOCKET  
x 470



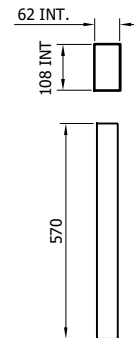
SR - "C" 100  
STIFFENER  
555 LG SOCKET  
INSTALLATION



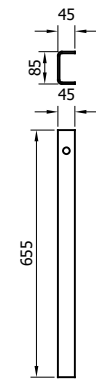
SR181 - C-100  
POST SOCKET  
x 520



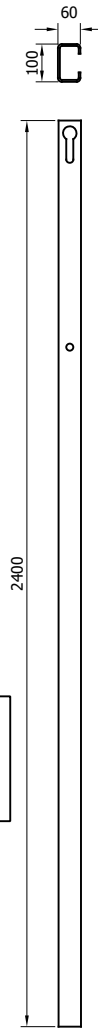
SR - "C" 100  
STIFFENER  
605 LG SOCKET  
INSTALLATION



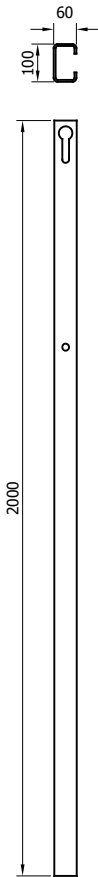
SR183 - C-100  
POST SOCKET  
x 570



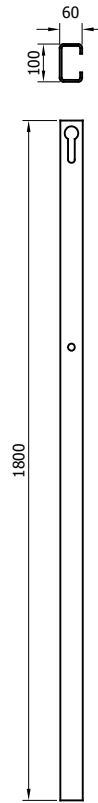
SR - "C" 100  
STIFFENER  
655 LG SOCKET  
INSTALLATION



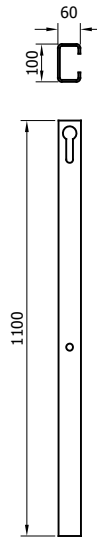
SR172 - TYPE 'A' POST  
"C" 100 2000mm



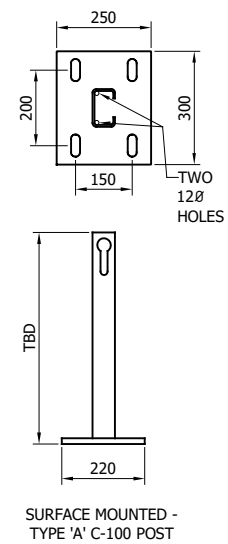
SR171 - TYPE 'A' POST  
"C" 100 1800mm



SR170 - TYPE 'A' POST  
"C" 100 1100mm



SR174 - "C" 100  
STIFFENER  
DRIVEN INSTALLATION



SR100 - A21  
REINFORCING  
RING

SURFACE MOUNTED -  
TYPE 'A' C-100 POST

POST STIFFENER NOT  
REQUIRED FOR SURFACE  
MOUNTED OR OFFSET POSTS

| REV# | DATE     | DETAILS               | INITIAL |
|------|----------|-----------------------|---------|
| 05   | 22.07.20 | EXP BEAM NOTE ADDED   | M.T     |
| 04   | 18.06.20 | EXPANSION BEAMS ADDED | M.T     |
| 03   | 21.06.19 | BEAM LENGTH REVISED   | M.T     |
| 02   | 12.02.19 | DETAILS REVISED       | M.T     |
| 01   | 06.11.18 | BEAM CODES REVISED    | M.T     |
| 00   | 20.09.18 | DRAWING CREATED       | H.B     |

## EP c/c 6m N2 W4

N2.W4 VEHICLE RESTRAINT SYSTEM  
COMPONENTS SCHEMATIC  
A PROFILE (3mm) BEAM MOUNTED  
ON C-100 POSTS

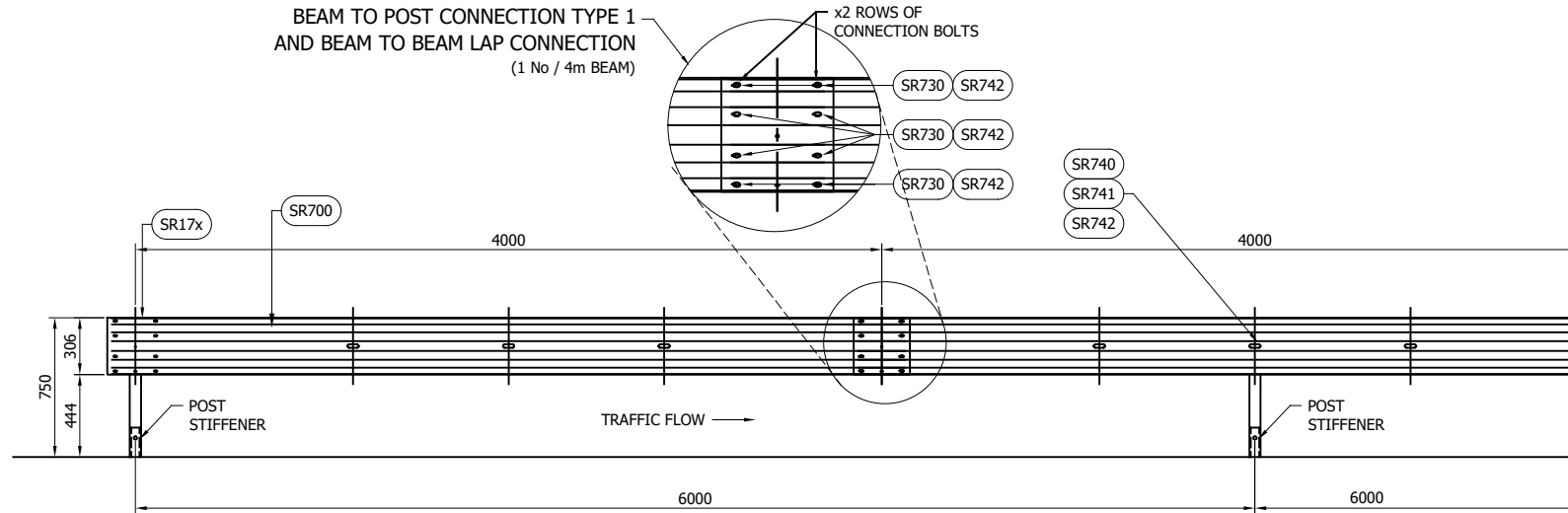
# SAFEROAD®

CONCORD HOUSE,  
BESSEMER WAY, SCUNTHORPE,  
NORTH LINCOLNSHIRE, DN15 8XE  
t: 01724 289119

FOR TECHNICAL ASSISTANCE CONTACT  
john.cudlipp@saferoad.co.uk

DRAWING NUMBER: **epN2W4-GA-00** REV#: **05**

**BEAM TO POST CONNECTION TYPE 1  
AND BEAM TO BEAM LAP CONNECTION**  
(1 No / 4m BEAM)



THIS EXPANSION ARRANGEMENT TO BE  
INSTALLED EVERY 150 METRES

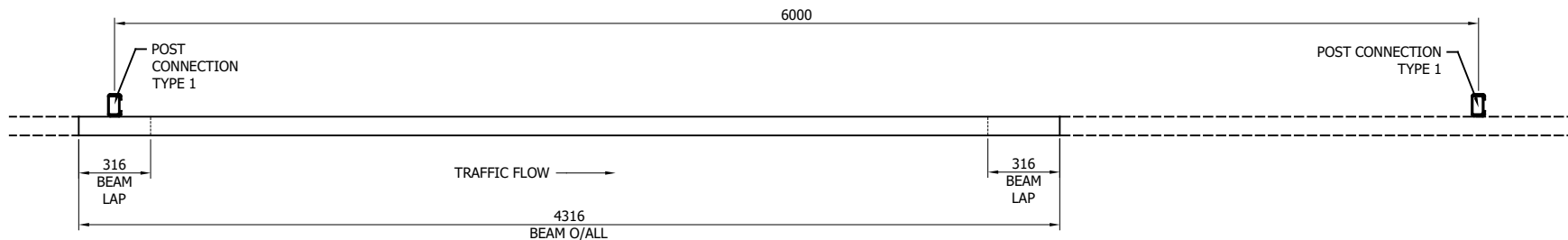
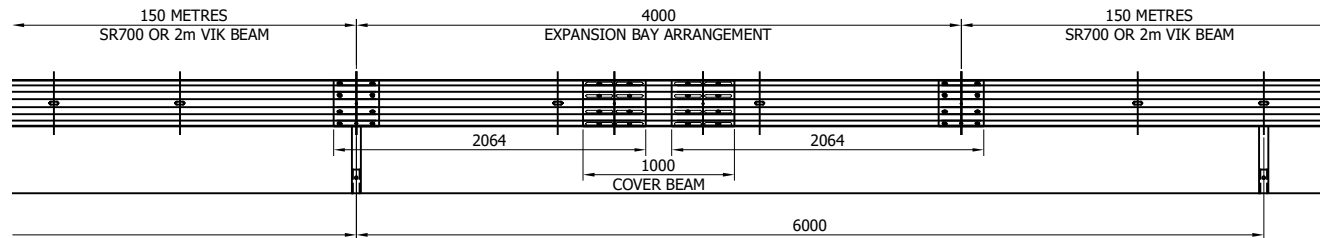
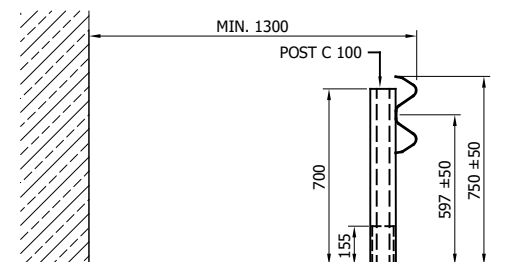


TABLE 'A' - SYSTEM COMPONENT SCHEDULE - QUANTITIES / 4m BEAM

| SAFEROAD UK PART NUMBER   | DESCRIPTION                | QUANTITY |
|---|----------------------------|----------|
| SR700   | VIK BEAM "A" PROFILE x 3mm | 1        |
| SEE TABLE 'B'   | POST "C" 100               | 2        |
| FOR SCHEDULE OF BOLTED CONNECTIONS REFER TO DRAWING NUMBER epN2W2-GA-02 |                            |          |

TABLE 'B' - SCHEDULE OF POST REFERENCE NUMBERS AND LENGTHS

| SAFEROAD UK PART NUMBER | POST LENGTH |
|-------------------------|-------------|
| SR170                   | 1100        |
| SR171                   | 1800        |
| SR172                   | 2000        |
| SR173                   | 2400        |



GENERAL NOTES:

1. P.S.B. = POINT FROM WHERE SET-BACK IS MEASURED.
2. POSTS ARE TO BE INSTALLED WITH THE CLOSED FACE OF THE CHANNEL TOWARDS THE ON-COMING TRAFFIC.
3. FOR OPTIONS ON POST FOUNDATIONS REFER TO DRAWING NUMBER MR-GA-020
4. FOR DEVIATIONS IN SYSTEM POST PITCH REFER TO DRAWING epN2W4-GA-40
5. WHEN TYING INTO ADJACENT VRS ONLY ONE WORKING WIDTH DIFFERENCE IS PERMITTED.
6. WHERE A KERB IS PRESENT THE MAXIMUM KERB HEIGHT IS 100mm. SHOULD THE KERB BE HIGHER THAN 100mm AND THE FENCE IS SETBACK LESS THAN 250mm FROM FACE OF KERB THE SYSTEM HEIGHT IS MEASURED FROM THE CARRIAGEWAY. IF THE SETBACK IS MORE THAN 250mm FROM THE FACE OF KERB THE SYSTEM HEIGHT IS MEASURED FROM THE TOP OF THE KERB. SEE MR-GA-002.
7. FOR MINIMUM LENGTH OF FULL HEIGHT VRS REFER TO SAFEROAD MEGARAIL MANUAL.

| REVn | DATE     | DETAILS             | INITIAL |
|------|----------|---------------------|---------|
| 06   | 18.06.20 | EXPANSION ADDED     | M.T     |
| 05   | 04.03.20 | DETAILS REVISED     | M.T     |
| 04   | 21.06.19 | BEAM LENGTH REVISED | M.T     |
| 03   | 01.04.19 | DETAILS REVISED     | M.T     |
| 02   | 12.02.19 | TITLEBLOCK REVISED  | M.T     |
| 01   | 06.11.18 | BEAM CODES REVISED  | M.T     |
| 00   | 20.09.18 | DRAWING CREATED     | H.B     |

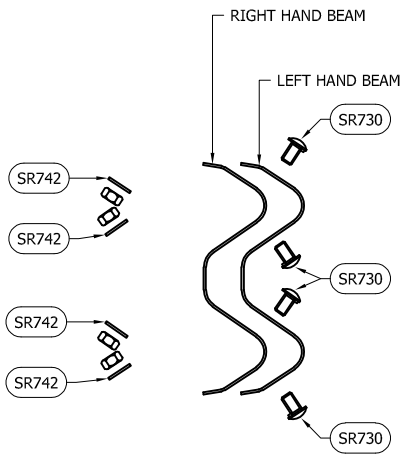
**EP c/c 6m  
N2 W4**

N2.W4 VEHICLE RESTRAINT SYSTEM  
SETTING OUT ARRANGEMENT  
'A' PROFILE (3mm) BEAM MOUNTED  
ON C-100 POSTS

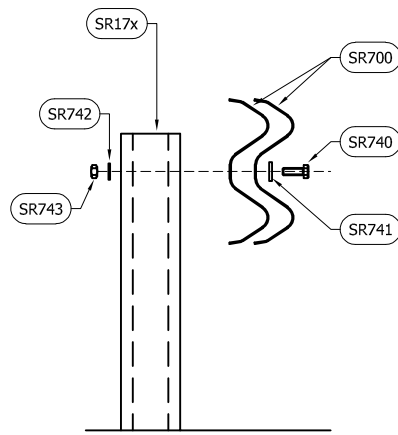
**SAFEROAD®**

CONCORD HOUSE,  
BESSEMER WAY, SCUNTHORPE,  
NORTH LINCOLNSHIRE, DN15 8XE  
t: 01724 289119  
FOR TECHNICAL ASSISTANCE CONTACT  
john.cudlipp@saferoad.co.uk

|                 |       |
|-----------------|-------|
| DRAWING NUMBER: | REVn: |
| epN2W4-GA-01    | 06    |



BEAM TO BEAM CONNECTION  
ARRANGEMENT  
(x2 LOCATIONS / BEAM END)



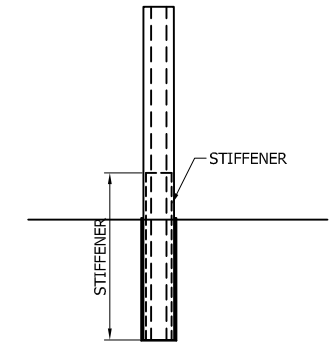
BEAM TO POST  
CONNECTION TYPE 1

| BOLTING COMPONENT SCHEDULE - QUANTITIES / BEAM |  |                         |
|--|--|-------------------------|
| SAFEROAD UK PART NUMBER                        | DESCRIPTION                            | BEAM TO BEAM CONNECTION |
| SR730  | SETSCREW 4.6 LIP M16x25 c/w FLANGE NUT | 8 (+8)                  |
| SR742  | WASHER M16 18φ HOLE                    | 8 (+8)                  |

| BOLTING COMPONENT SCHEDULE - QUANTITIES / POST |                                   |                   |
|--|-----------------------------------|-------------------|
| SAFEROAD UK PART NUMBER                        | DESCRIPTION                       | TYPE 1 CONNECTION |
| SR740  | SETSCREW 8.8 M16 x 45             | 1                 |
| SR741  | WASHER PLATE 115 x 40 x 5 DIA. 18 | 1                 |
| SR742  | WASHER M16 18φ HOLE               | 1                 |
| SR743  | HEXAGON NUT M16                   | 1                 |

GENERAL NOTES:

- NUMBERS IN THE SCHEDULES SUFFIXED (+) DENOTES THE ADDITIONAL QUANTITY OF COMPONENTS REQUIRED FOR EXTREME ENDS OF INDIVIDUAL RUNS OF BARRIER.



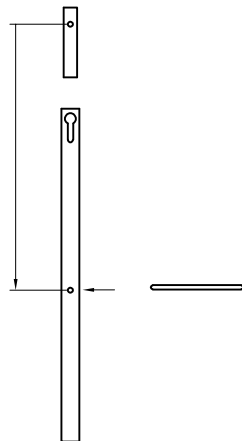
SOCKETED POST ARRANGEMENT  
SHOWING STIFFENER

\*\* BEAM REFERENCES i.e. LEFT / RIGHT HAND ARE FOR VERGE INSTALLATIONS; FOR CENTRAL RESERVATION INSTALLATIONS THE REFERENCES ARE REVERSED

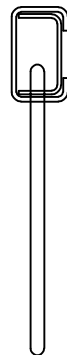
INSTALLATION OF POST STIFFENER

1. INSERT POST STIFFENER

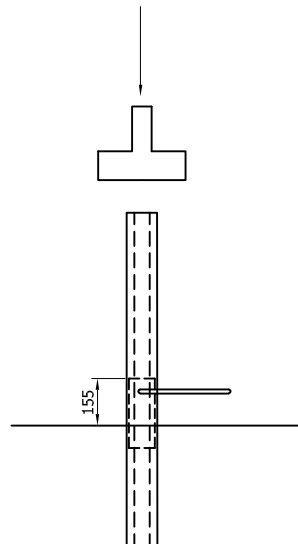
PLACE THE POST STIFFENER WITH THE CLOSED SIDE AGAINST THE TRAFFIC INTO THE POSTS UNTIL THE HOLES OF THE POST STIFFENER OVERLAP WITH THE HOLES OF THE POST.



FIX THE POST STIFFENER WITH A SUITABLE TOOL (FOR EXAMPLE A TAPERED BAR/PODGER) IN THE PROCESS YOU MUST TAKE CARE TO ENSURE THAT THE LONGER SIDE OF THE POST STIFFENER POINTS DOWNWARDS.

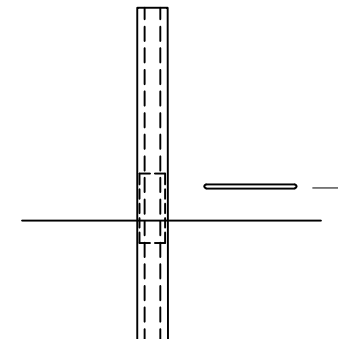


2. DRIVE POST & POST STIFFENER



3. REMOVE THE FIXATION

REMOVE THE FIXING TOOL AFTER RAMMING.



| REVn | DATE     | DETAILS            | INITIAL |
|------|----------|--------------------|---------|
| 02   | 12.02.19 | TITLEBLOCK REVISED | M.T     |
| 01   | 06.11.18 | BEAM CODES REVISED | M.T     |
| 00   | 20.09.18 | DRAWING CREATED    | H.B     |

EP c/c 6m  
N2 W4

N2.W4 VEHICLE RESTRAINT SYSTEM  
SYSTEM BOLTING ARRANGEMENT  
'A' PROFILE (3mm) BEAM MOUNTED  
ON C-100 POSTS

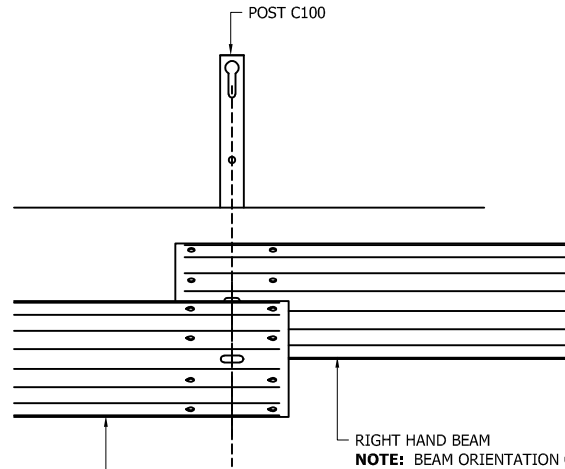
SAFEROAD®

CONCORD HOUSE,  
BESSEMER WAY, SCUNTHORPE,  
NORTH LINCOLNSHIRE, DN15 8XE  
t: 01724 289119  
FOR TECHNICAL ASSISTANCE CONTACT  
john.cudlipp@saferoad.co.uk

|                                 |             |
|---------------------------------|-------------|
| DRAWING NUMBER:<br>epN2W4-GA-02 | REVn:<br>02 |
|---------------------------------|-------------|

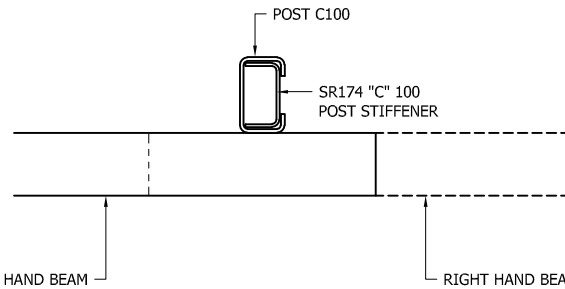
GENERAL NOTES:

1. POSTS ARE TO BE INSTALLED WITH THE CLOSED FACE OF THE CHANNEL TOWARDS THE ON-COMING TRAFFIC.



LEFT HAND BEAM  
**NOTE:** BEAM ORIENTATION  
 TEARDROP HOLES TO BEAM  
 DEPARTURE END

RIGHT HAND BEAM  
**NOTE:** BEAM ORIENTATION CIRCULAR  
 HOLES TO BEAM APPROACH END



LEFT HAND BEAM  
 LAPPED OVER RIGHT HAND BEAM

POST C100  
 SR174 "C" 100  
 POST STIFFENER

RIGHT HAND BEAM

\*\* BEAM REFERENCES i.e. LEFT / RIGHT HAND ARE FOR VERGE  
 INSTALLATIONS; FOR CENTRAL RESERVATION INSTALLATIONS THE  
 REFERENCES ARE REVERSED

| REV# | DATE     | DETAILS            | INITIAL |
|------|----------|--------------------|---------|
| 01   | 12.02.19 | TITLEBLOCK REVISED | M.T     |
| 00   | 20.09.18 | DRAWING CREATED    | H.B     |

## EP c/c 6m N2 W4

N2.W4 VEHICLE RESTRAINT SYSTEM.  
 BEAM LAPPING DETAIL FOR W4  
 MEGARAIL SYSTEM

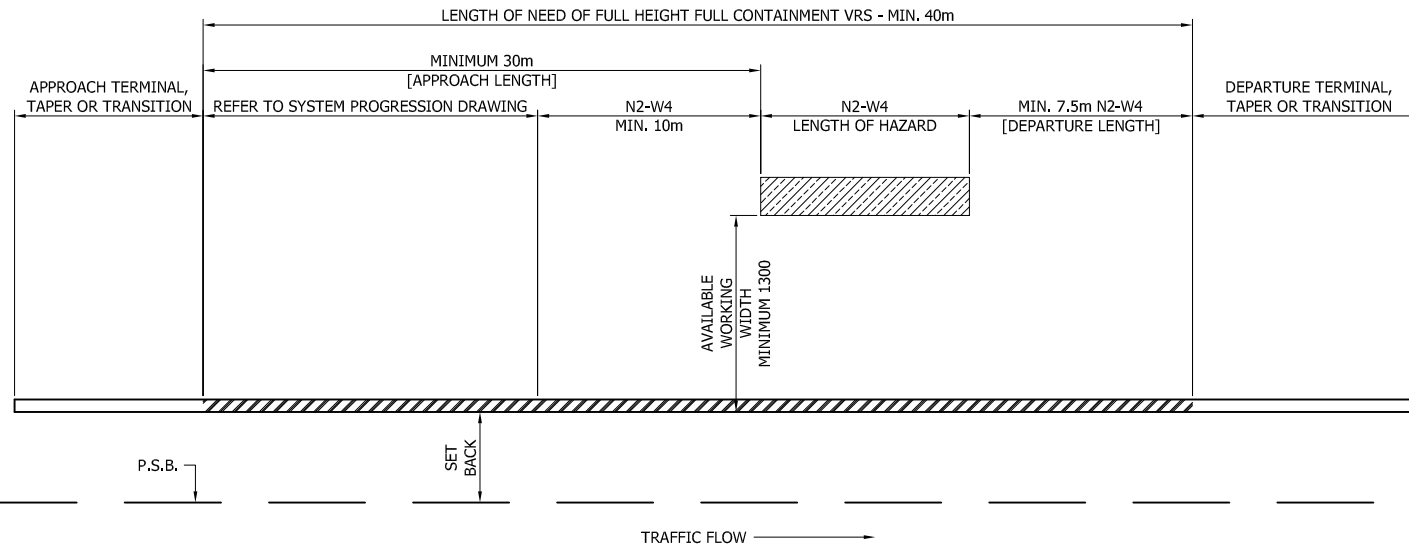
# SAFEROAD®

CONCORD HOUSE,  
 BESSEMER WAY, SCUNTHORPE,  
 NORTH LINCOLNSHIRE, DN15 8XE  
 t: 01724 289119  
 FOR TECHNICAL ASSISTANCE CONTACT  
 john.cudlipp@saferoad.co.uk

|                 |       |
|-----------------|-------|
| DRAWING NUMBER: | REV#: |
| epN2W4-GA-03    | 01    |

GENERAL NOTES:

1. P.S.B. = POINT FROM WHERE SET-BACK IS MEASURED,
2. POSTS ARE TO BE INSTALLED WITH THE CLOSED FACE OF THE CHANNEL TOWARDS THE ON-COMING TRAFFIC.
3. MINIMUM LENGTH OF FULL HEIGHT VRS IS 40m



## EP c/c 6m N2 W4

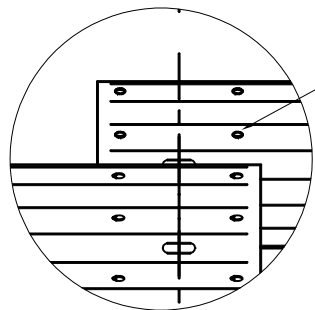
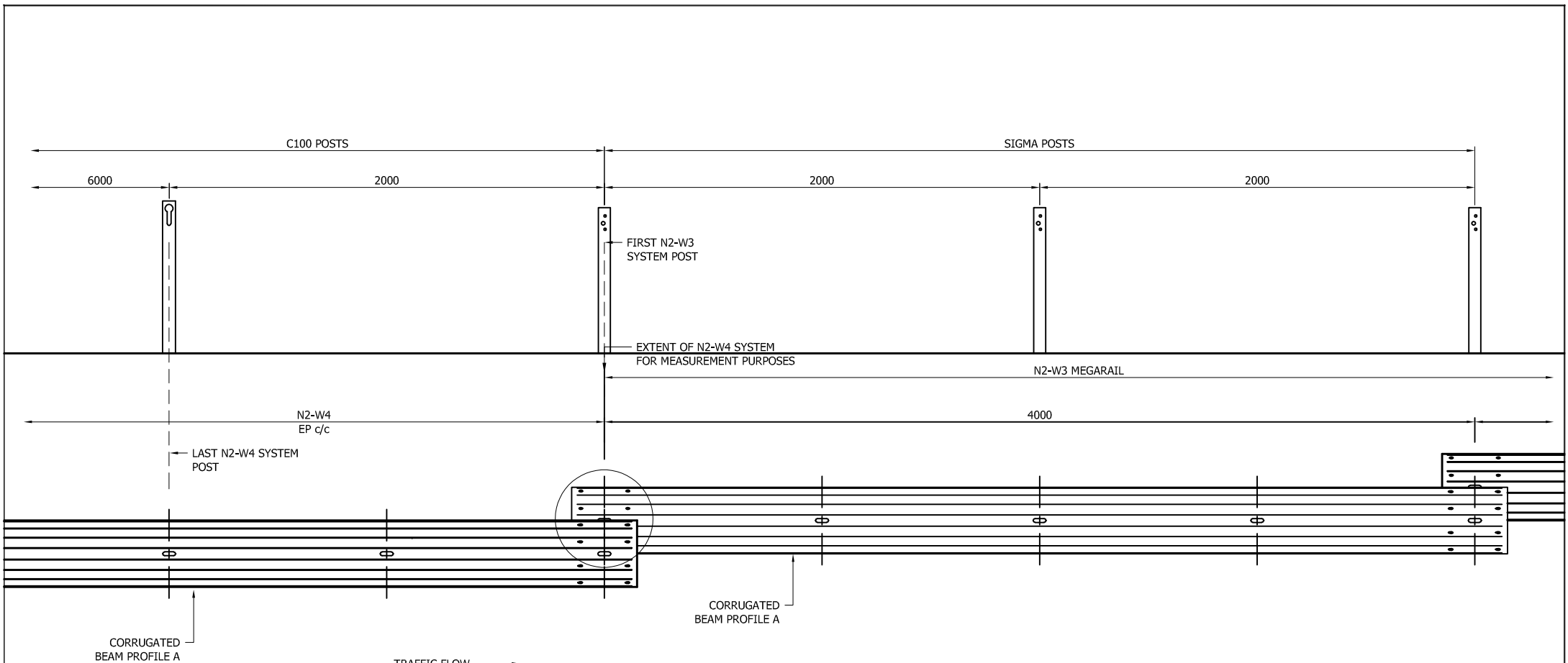
VEHICLE RESTRAINT SYSTEM.  
SYSTEM PROGRESSION SCHEMATIC  
FOR N2.W4 PROTECTION TO HAZARD

### SAFEROAD®

CONCORD HOUSE,  
BESSEMER WAY, SCUNTHORPE,  
NORTH LINCOLNSHIRE, DN15 8XE  
t: 01724 289119  
FOR TECHNICAL ASSISTANCE CONTACT  
john.cudlipp@saferoad.co.uk

| REV# | DATE     | DETAILS            | INITIAL |
|------|----------|--------------------|---------|
| 01   | 12.02.19 | TITLEBLOCK REVISED | M.T     |
| 00   | 20.09.18 | DRAWING CREATED    | H.B     |

|                 |       |
|-----------------|-------|
| DRAWING NUMBER: | REV#: |
| epN2W4-GA-10    | 01    |



**NOTE:** BEAM ORIENTATION CIRCULAR HOLES TO BEAM APPROACH END

**GENERAL NOTES:**

1. POSTS ARE TO BE INSTALLED WITH THE CLOSED FACE OF THE CHANNEL TOWARDS THE ON-COMING TRAFFIC.

**EP c/c 6m  
N2 W4**

N2.W4 VEHICLE RESTRAINT SYSTEM.  
N2-W4 INTO N2-W3 SYSTEM  
PROGRESSION CONNECTION DETAIL

**SAFEROAD®**

CONCORD HOUSE,  
BESSEMER WAY, SCUNTHORPE,  
NORTH LINCOLNSHIRE, DN15 8XE  
t: 01724 289119  
FOR TECHNICAL ASSISTANCE CONTACT  
john.cudlipp@saferoad.co.uk

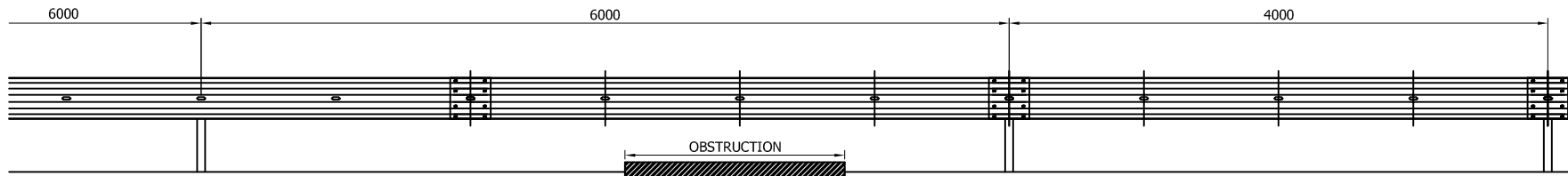
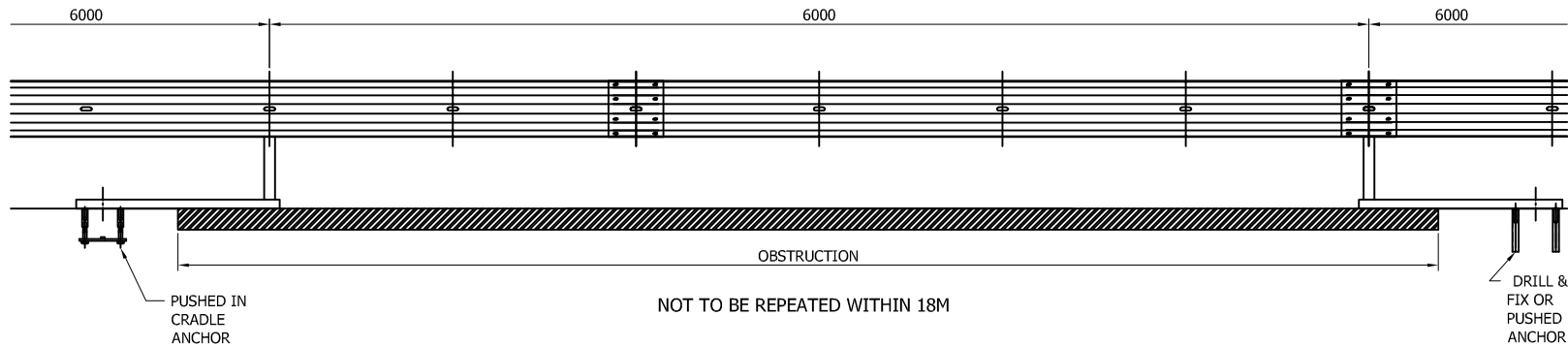
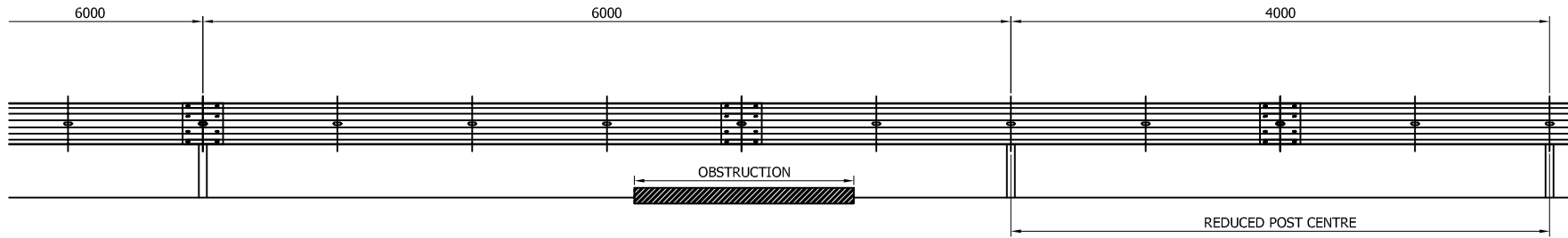
| REV# | DATE     | DETAILS         | INITIAL |
|------|----------|-----------------|---------|
| 01   | 12.02.19 | DETAILS REVISED | M.T     |
| 00   | 20.09.18 | DRAWING CREATED | H.B     |

|                 |              |       |    |
|-----------------|--------------|-------|----|
| DRAWING NUMBER: | epN2W4-GA-20 | REV#: | 01 |
|-----------------|--------------|-------|----|

\*\* BEAM REFERENCES I.e. LEFT / RIGHT HAND ARE FOR VERGE INSTALLATIONS; FOR CENTRAL RESERVATION INSTALLATIONS THE REFERENCES ARE REVERSED

GENERAL NOTES:

1. IN PRINCIPLE, THE DISTANCE BETWEEN THE POSTS ARE NOT EXCEEDED, IF THE SITE CONDITIONS DO NOT ALLOW A REGULAR DISTANCE, THE POST SPACING MUST BE REDUCED WITH AN ADDITIONAL POST.
2. OFFSET POSTS SHOWN ON DRAWING epN2W4-GA-00 CAN BE USED.



| REVn | DATE     | DETAILS            | INITIAL |
|------|----------|--------------------|---------|
| 01   | 12.02.19 | TITLEBLOCK REVISED | M.T     |
| 00   | 20.09.18 | DRAWING CREATED    | H.B     |

## EP c/c 6m N2 W4

N2.W4 VEHICLE RESTRAINT SYSTEM  
DEVIATION SETTING OUT  
ARRANGEMENT

# SAFEROAD®

CONCORD HOUSE,  
BESSEMER WAY, SCUNTHORPE,  
NORTH LINCOLNSHIRE, DN15 8XE  
t: 01724 289119  
FOR TECHNICAL ASSISTANCE CONTACT  
john.cudlipp@saferoad.co.uk

|                 |       |
|-----------------|-------|
| DRAWING NUMBER: | REVn: |
| epN2W4-GA-40    | 01    |