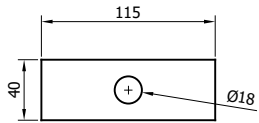
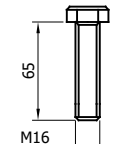


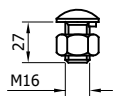
SR000 - "A" PROFILE BEAM 4.3m x 2.5mm THK



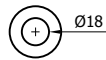
WASHER PLATE  
115 x 40 x 6 DIA. 18



GF216 - SETSCREW 8.8  
M16x65



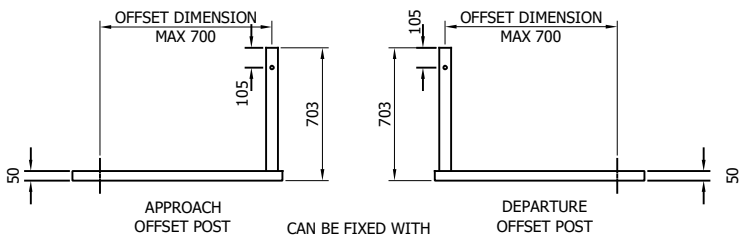
SR200 - SETSCREW 4.6  
LIP M16x27 c/w NUT



SR300 - WASHER  
18Ø



GF170 - M16 NUT



APPROACH  
OFFSET POST

DEPARTURE  
OFFSET POST

CAN BE FIXED WITH  
CAST IN ANCHORS, DRILL  
AND FIX ANCHORS OR  
PUSHED IN ANCHORS  
AT 180x180 CENTERS

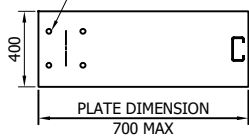


PLATE DIMENSION  
700 MAX

\*BASEPLATE DRILL  
& TAPPED FOR  
LIFTING EYE

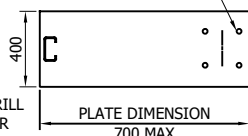
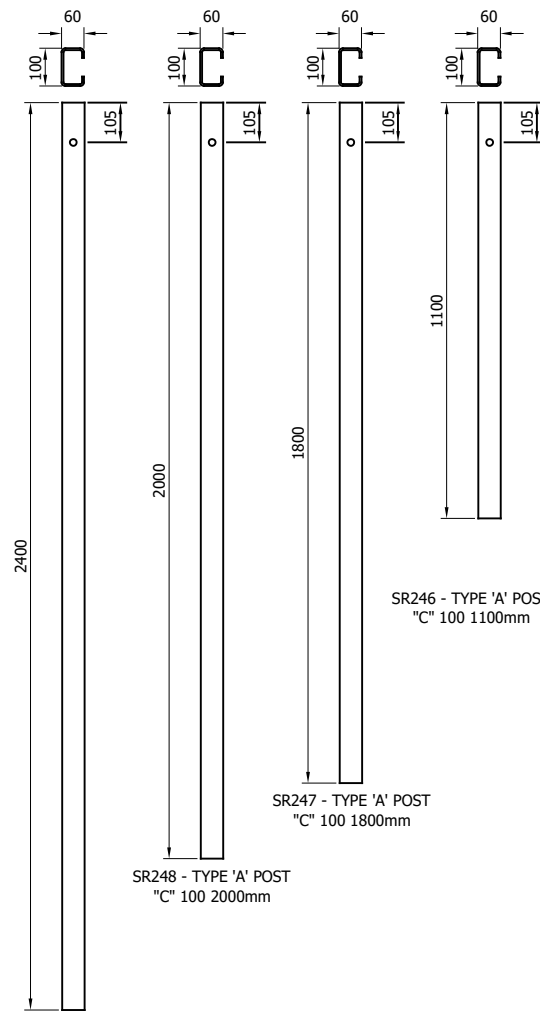


PLATE DIMENSION  
700 MAX

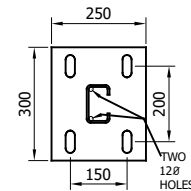


SR246 - TYPE 'A' POST  
"C" 100 1100mm

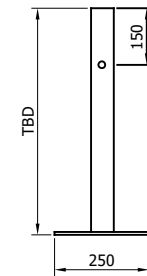
SR247 - TYPE 'A' POST  
"C" 100 1800mm

SR248 - TYPE 'A' POST  
"C" 100 2000mm

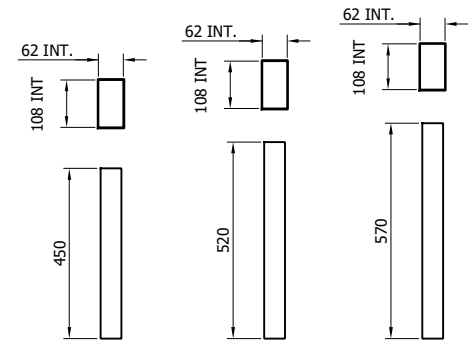
SR249 - TYPE 'A' POST  
"C" 100 2400mm



POST STIFFENER NOT  
REQ. FOR SURFACE  
MOUNTED OFFSET  
POSTS



SURFACE MOUNTED -  
TYPE 'A' C-100 POST



SR180 - C-100  
POST SOCKET  
x 450

SR181 - C-100  
POST SOCKET  
x 520

SR183 - C-100  
POST SOCKET  
x 570

00	16/03/20	DRAWING CREATED	H.B
REVn	DATE	DETAILS	INITIAL

# MegaRail ea N2W1

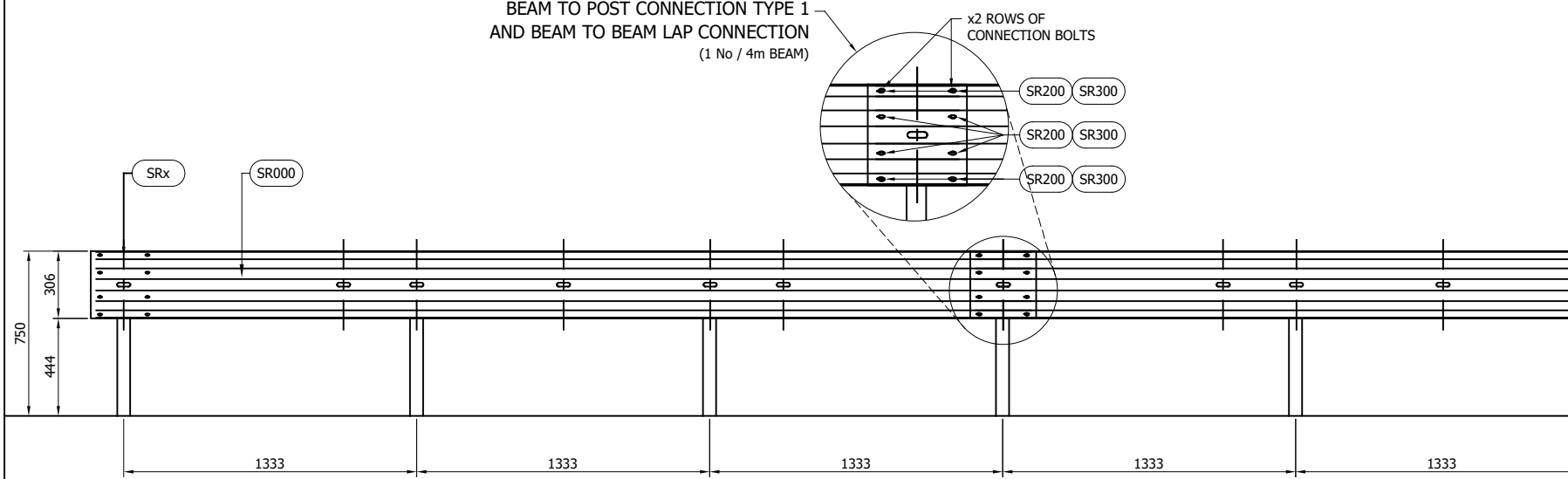
N2W1 VEHICLE RESTRAINT SYSTEM  
COMPONENTS SCHEMATIC

## SAFEROAD®

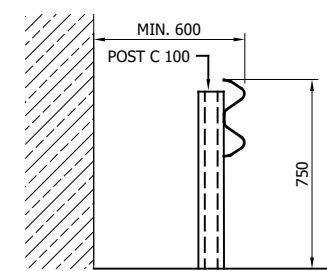
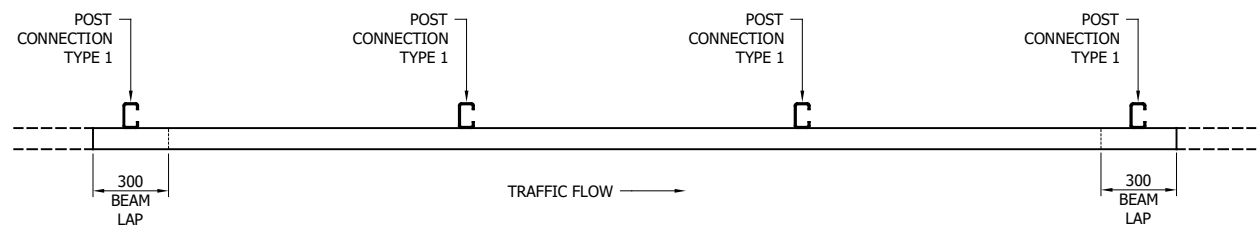
CONCORD HOUSE,  
BESSEMER WAY, SCUNTHORPE,  
NORTH LINCOLNSHIRE, DN15 8XE  
t: 01724 289119  
FOR TECHNICAL ASSISTANCE CONTACT  
john.cudlipp@saferoad.co.uk

DRAWING NUMBER:	REVn:
eaN2W1-GA-00	00

**BEAM TO POST CONNECTION TYPE 1  
AND BEAM TO BEAM LAP CONNECTION**  
(1 No / 4m BEAM)



- GENERAL NOTES:
1. P.S.B. = POINT FROM WHERE SET-BACK IS MEASURED.
  2. POSTS ARE TO BE INSTALLED WITH THE CLOSED FACE OF THE CHANNEL TOWARDS THE ON-COMING TRAFFIC.
  3. FOR OPTIONS ON POST FOUNDATIONS REFER TO DRAWING NUMBER MR-GA-020
  4. FOR DEVIATIONS IN SYSTEM POST PITCH REFER TO DRAWING eaN2W1-GA-40
  5. WHEN TYING INTO ADJACENT VRS ONLY ONE WORKING WIDTH DIFFERENCE IS PERMITTED.
  6. WHERE A KERB IS PRESENT THE MAXIMUM KERB HEIGHT IS 100mm. SHOULD THE KERB BE HIGHER THAN 100mm AND THE FENCE IS SETBACK LESS THAN 250mm FROM FACE OF KERB THE SYSTEM HEIGHT IS MEASURED FROM THE CARRIAGEWAY. IF THE SETBACK IS MORE THAN 250mm FROM THE FACE OF KERB THE SYSTEM HEIGHT IS MEASURED FROM THE TOP OF THE KERB. SEE MR-GA-002.
  7. FOR MINIMUM LENGTH OF FULL HEIGHT VRS REFER TO SAFEROAD MEGARAIL MANUAL.



00	16/03/20	DRAWING CREATED	H.B
REVn	DATE	DETAILS	INITIAL

**MegaRail ea N2W1**

N2W1 VEHICLE RESTRAINT SYSTEM ASSEMBLY AND SETTING OUT ARRANGEMENT

TABLE 'A' - SYSTEM COMPONENT SCHEDULE - QUANTITIES / 4m BEAM

SAFEROAD UK PART NUMBER	DESCRIPTION	QUANTITY
SR000	BEAM "A" PROFILE 4.3mm x 2.5mm	1
SEE TABLE 'B'	POST "C" 100	2

FOR SCHEDULE OF BOLTED CONNECTIONS REFER TO DRAWING NUMBER epN2W2-GA-02

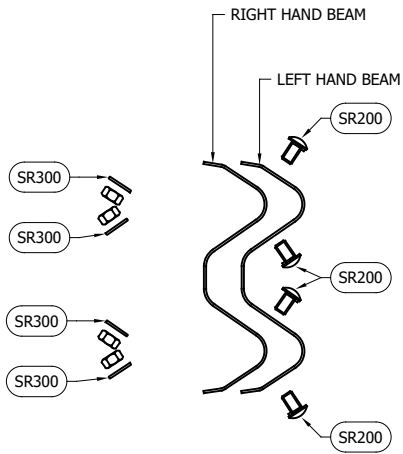
TABLE 'B' - SCHEDULE OF POST REFERENCE NUMBERS AND LENGTHS

SAFEROAD UK PART NUMBER	POST LENGTH
SR246	1100
SR247	1800
SR248	2000
SR249	2400

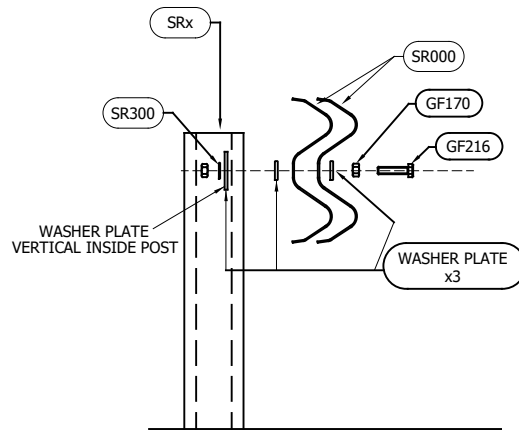
**SAFEROAD®**

CONCORD HOUSE,  
BESSEMER WAY, SCUNTHORPE,  
NORTH LINCOLNSHIRE, DN15 8XE  
t: 01724 289119  
FOR TECHNICAL ASSISTANCE CONTACT  
john.cudlipp@saferoad.co.uk

DRAWING NUMBER:	REVn:
eaN2W1-GA-01	00



BEAM TO BEAM CONNECTION  
ARRANGEMENT  
(x2 LOCATIONS / BEAM END)



BEAM TO POST  
CONNECTION TYPE 1

BOLTING COMPONENT SCHEDULE - QUANTITIES / BEAM		
SAFEROAD UK PART NUMBER	DESCRIPTION	BEAM TO BEAM CONNECTION
SR200	SETSCREW 4.6 LIP M16x27 c/w NUT	8 (+8)
SR300	WASHER M16 18Ø HOLE	8 (+8)

BOLTING COMPONENT SCHEDULE - QUANTITIES / POST		
SAFEROAD UK PART NUMBER	DESCRIPTION	TYPE 1 CONNECTION
GF216	SETSCREW 8.8 M16 x 65	1
GF170	M16 NUT	1
	WASHER PLATE 115 x 40 x 6 DIA. 18	3
SR300	WASHER M16 18Ø HOLE	1

GENERAL NOTES:

- NUMBERS IN THE SCHEDULES SUFFIXED (+) DENOTES THE ADDITIONAL QUANTITY OF COMPONENTS REQUIRED FOR EXTREME ENDS OF INDIVIDUAL RUNS OF BARRIER.

\*\* BEAM REFERENCES i.e. LEFT / RIGHT HAND ARE FOR VERGE INSTALLATIONS; FOR CENTRAL RESERVATION INSTALLATIONS THE REFERENCES ARE REVERSED

00	16/03/20	DRAWING CREATED	H.B
REVn	DATE	DETAILS	INITIAL

## MegaRail ea N2W1

N2W1 VEHICLE RESTRAINT SYSTEM  
BOLTING ARRANGEMENTS

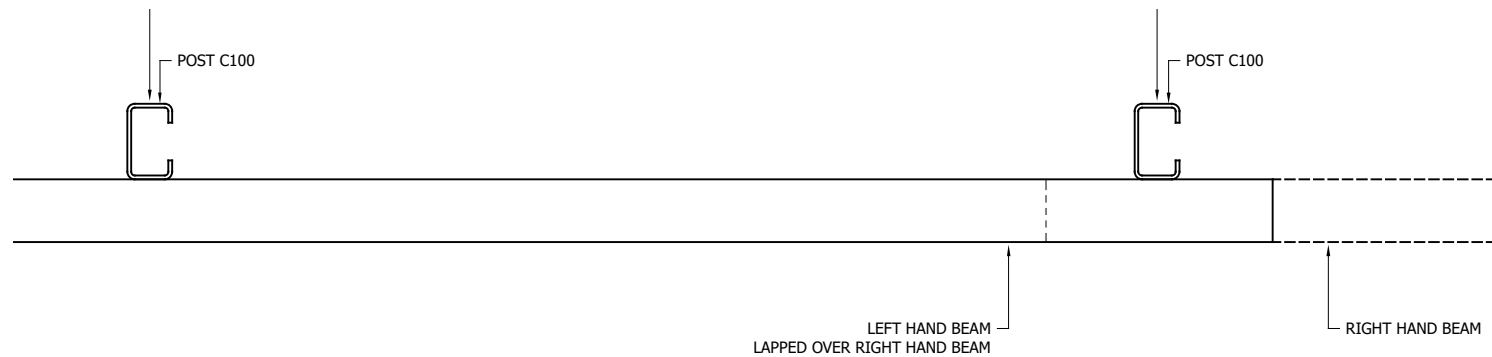
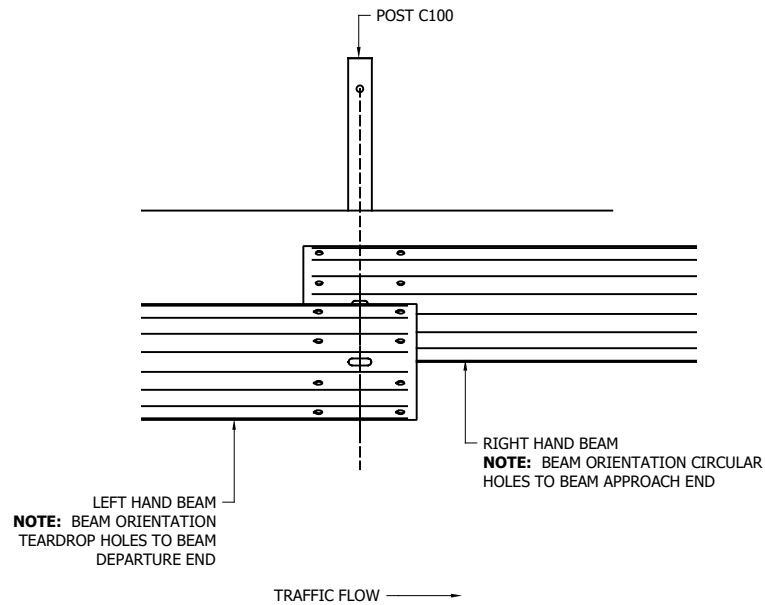
# SAFEROAD®

CONCORD HOUSE,  
BESSEMER WAY, SCUNTHORPE,  
NORTH LINCOLNSHIRE, DN15 8XE  
t: 01724 289119  
FOR TECHNICAL ASSISTANCE CONTACT  
john.cudlipp@saferoad.co.uk

DRAWING NUMBER:	REVn:
eaN2W1-GA-02	00

GENERAL NOTES:

1. POSTS ARE TO BE INSTALLED WITH THE CLOSED FACE OF THE CHANNEL TOWARDS THE ON-COMING TRAFFIC.



\*\* BEAM REFERENCES i.e. LEFT / RIGHT HAND ARE FOR VERGE INSTALLATIONS; FOR CENTRAL RESERVATION INSTALLATIONS THE REFERENCES ARE REVERSED

00	16/03/20	DRAWING CREATED	H.B
REVn	DATE	DETAILS	INITIAL

## MegaRail ea N2W1

N2W1 VEHICLE RESTRAINT SYSTEM.  
BEAM LAPPING DETAIL FOR MEGARAIL SYSTEM

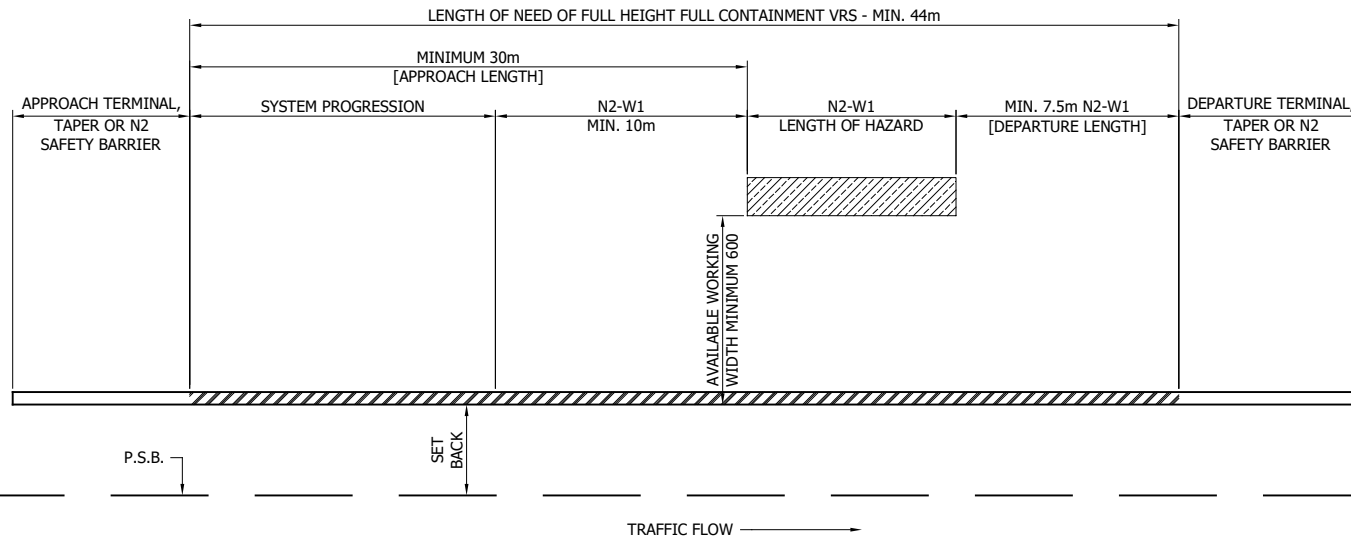
# SAFEROAD®

CONCORD HOUSE,  
BESSEMER WAY, SCUNTHORPE,  
NORTH LINCOLNSHIRE, DN15 8XE  
t: 01724 289119  
FOR TECHNICAL ASSISTANCE CONTACT  
john.cudlipp@saferoad.co.uk

DRAWING NUMBER:	REVn:
eaN2W1-GA-03	00

GENERAL NOTES:

1. P.S.B. = POINT FROM WHERE SET-BACK IS MEASURED.
2. POSTS ARE TO BE INSTALLED WITH THE CLOSED FACE OF THE CHANNEL TOWARDS THE ON-COMING TRAFFIC.
3. MINIMUM LENGTH OF FULL HEIGHT VRS IS 44m



# MegaRail ea N2W1

VEHICLE RESTRAINT SYSTEM.  
SYSTEM PROGRESSION SCHEMATIC  
FOR N2W1 PROTECTION TO HAZARD

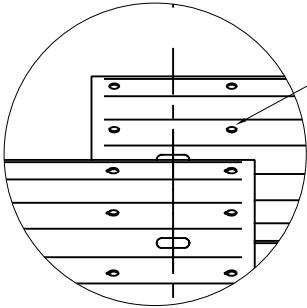
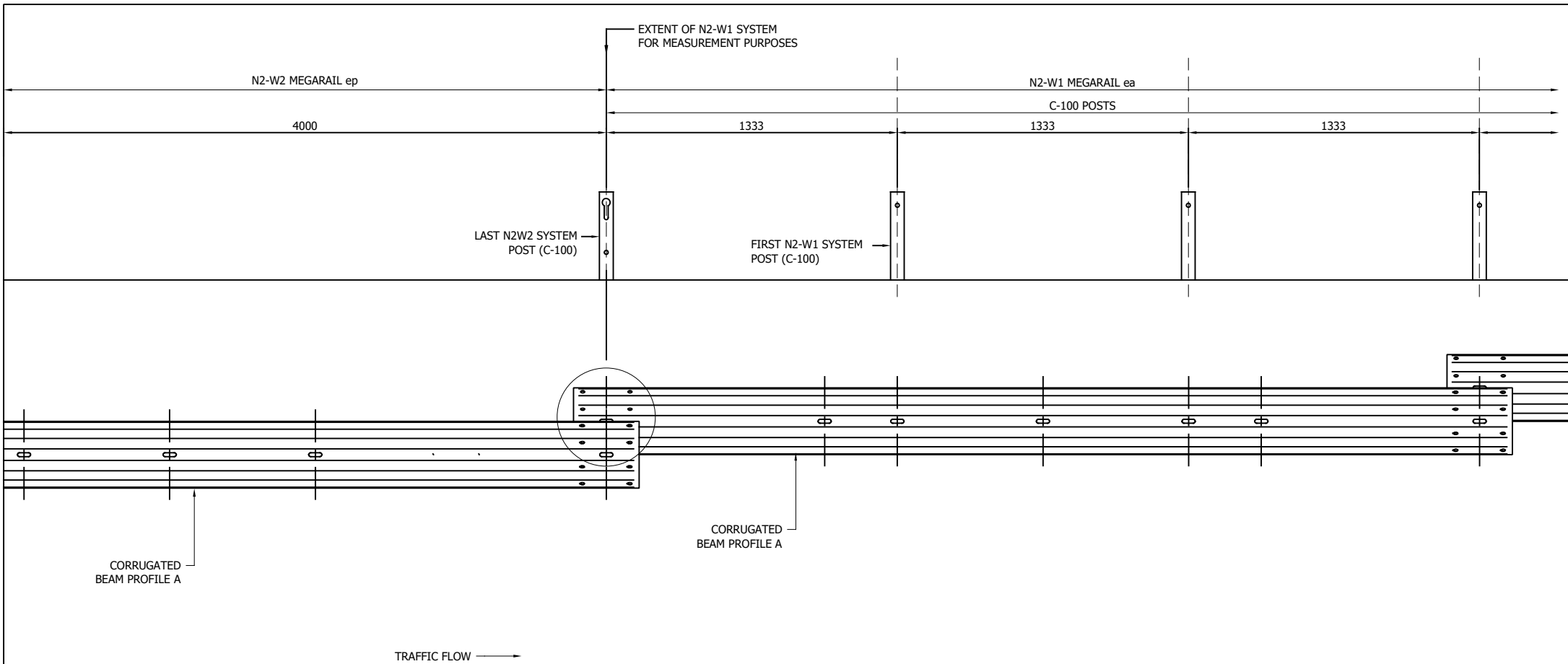
## SAFEROAD®

CONCORD HOUSE,  
BESSEMER WAY, SCUNTHORPE,  
NORTH LINCOLNSHIRE, DN15 8XE  
t: 01724 289119  
FOR TECHNICAL ASSISTANCE CONTACT  
john.cudlipp@saferoad.co.uk

DRAWING NUMBER:      REVn:

eaN2W1-GA-010      00

00	16/03/20	DRAWING CREATED	H.B
REVn	DATE	DETAILS	INITIAL



**NOTE:** BEAM ORIENTATION CIRCULAR HOLES TO BEAM APPROACH END

- GENERAL NOTES:  
 1. POSTS ARE TO BE INSTALLED WITH THE CLOSED FACE OF THE CHANNEL TOWARDS THE ON-COMING TRAFFIC.

# MegaRail ea N2W1

N2W1 VEHICLE RESTRAINT SYSTEM.  
PROGRESSION CONNECTION DETAIL

## SAFEROAD®

CONCORD HOUSE,  
 BESSEMER WAY, SCUNTHORPE,  
 NORTH LINCOLNSHIRE, DN15 8XE  
 t: 01724 289119  
 FOR TECHNICAL ASSISTANCE CONTACT  
 john.cudlipp@saferoad.co.uk

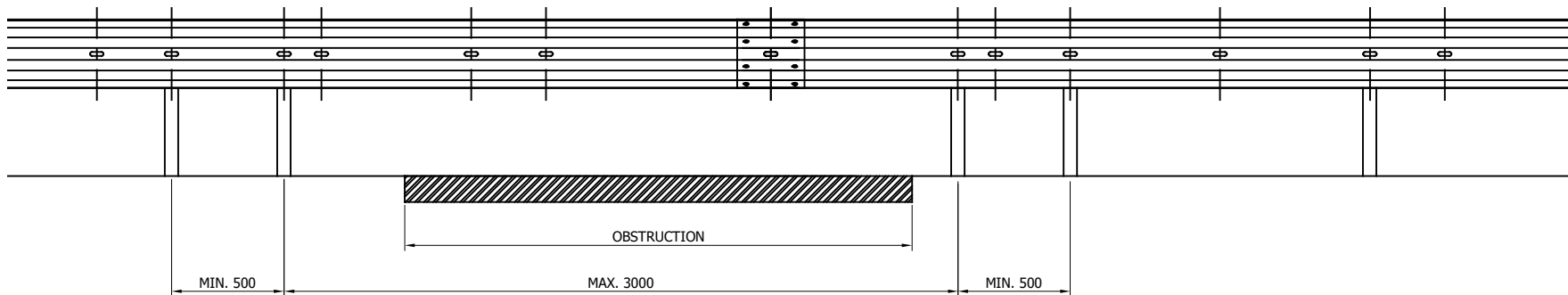
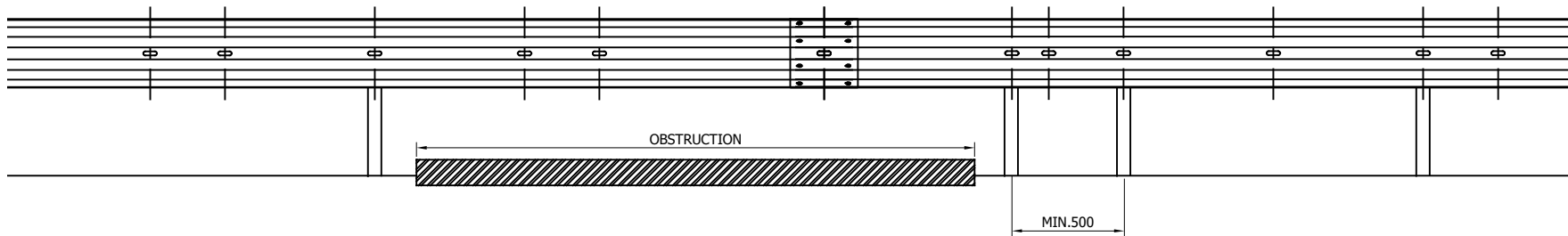
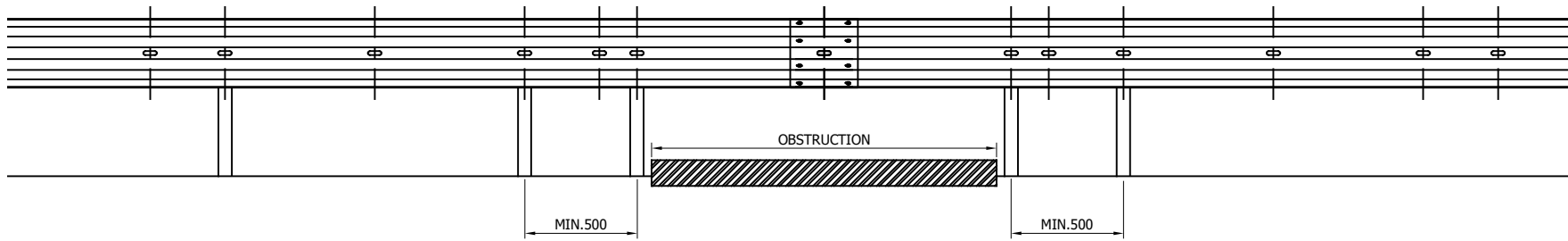
00	16/03/20	DRAWING CREATED	H.B
REVn	DATE	DETAILS	INITIAL

DRAWING NUMBER:	REVn:
eaN2W1-GA-20	00

\*\* BEAM REFERENCES i.e. LEFT / RIGHT HAND ARE FOR VERGE INSTALLATIONS; FOR CENTRAL RESERVATION INSTALLATIONS THE REFERENCES ARE REVERSED

GENERAL NOTES:

1. IF THE SITE CONDITIONS DO NOT ALLOW A POST TO BE INSTALLED ON THE SYSTEM PITCH DEVIATIONS CAN BE APPLIED. THE OBSTRUCTED POST CAN BE LEFT OUT AND EXTRA POSTS INSTALLED TO SPAN THE OBSTRUCTION. THE NEW POST SPACING MUST NOT EXCEED 3000mm AND MUST BE LESS THAN 500mm. ALTHOUGH IT WOULD BE BENEFICIAL TO USE THE HOLES ALREADY IN THE BEAM IT IS ACCEPTABLE TO DRILL NEW HOLES IN THE DESIRED POSITIONS AND TREAT WITH ZINC RICH PAINT.
2. OFFSET POSTS SHOWN ON DRAWING eaN2W1-GA-00 CAN BE USED. INSERT THE ORIGINAL POST SPACING INSTEAD OF 3000mm
3. PLEASE REFER TO MEGARAIL EA N2W1 MANUAL FOR INFORMATION ON DRILLING ADDITIONAL HOLES



PLEASE REFER TO MEGARAIL EA N2-W1 MANUAL FOR DETAILS ON DRILLING ADDITIONAL HOLES

00	16/03/20	DRAWING CREATED	H.B
REVn	DATE	DETAILS	INITIAL

## MegaRail ea N2W1

N2W1 VEHICLE RESTRAINT SYSTEM DEVIATION SETTING OUT ARRANGEMENT

# SAFEROAD®

CONCORD HOUSE,  
BESSEMER WAY, SCUNTHORPE,  
NORTH LINCOLNSHIRE, DN15 8XE  
t: 01724 289119  
FOR TECHNICAL ASSISTANCE CONTACT  
john.cudlipp@saferoad.co.uk

DRAWING NUMBER:	REVn:
eaN2W1-GA-40	00