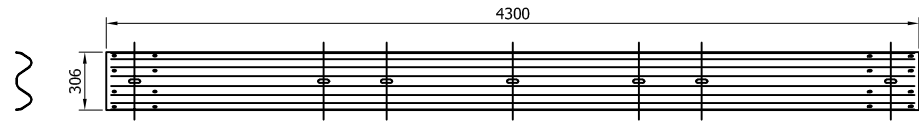
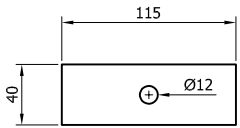


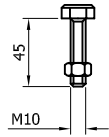
SR001 - 3mm BEAM
(CAN BE SUBSTITUTED BY BEAM SR028)



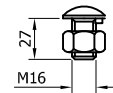
SR028 - A PROFILE 3MM BEAM



SR152 - WASHER PLATE 115 x 40 x 5 DIA.12



SR204 - SETSCREW 4.6 M10x45 c/w NUT



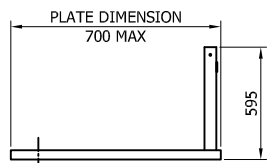
SR200 - SETSCREW 4,6 LIP M16x27 c/w NUT



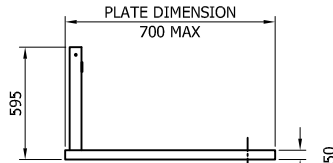
SR301 - M10 WASHER 11φ HOLE



SR300 - M16 WASHER 18φ HOLE

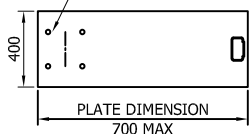


APPROACH OFFSET POST

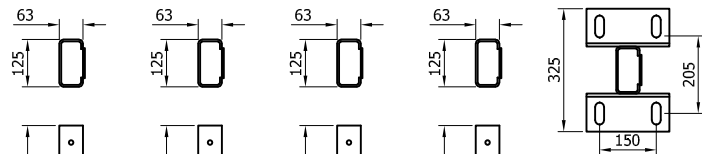
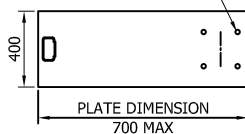


DEPARTURE OFFSET POST

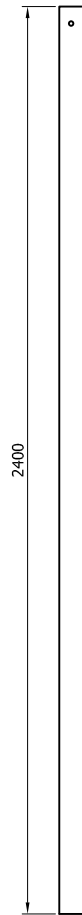
CAN BE FIXED WITH CAST IN ANCHORS, DRILL AND FIX ANCHORS OR PUSHED IN ANCHORS AT 180x180 CENTERS



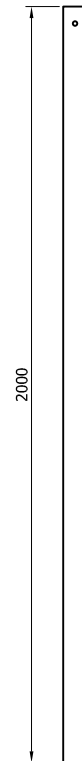
BASEPLATE DRILL & TAPPED FOR LIFTING EYE



SR049 - TYPE 'B' POST "C"
125 1100mm x 5

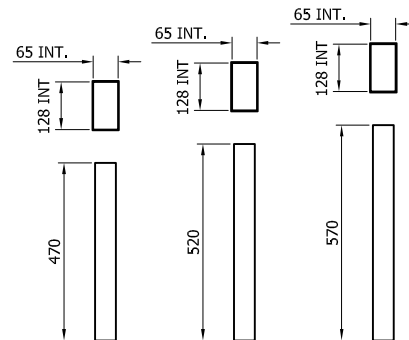


SR047 - TYPE 'B' POST "C" 125 1800mm x 5



SR048 - TYPE 'B' POST "C" 125 2000mm x 5

SR037 - TYPE 'B' POST "C" 125 2400mm x 5



SR080 - C-125 POST SOCKET x 470

SR081 - C-125 POST SOCKET x 520

SR083 - C-125 POST SOCKET x 570



NP001 - A21 REINFORCING RING

REV#	DATE	DETAILS	INITIAL
05	19/11/19	BEAM DETAILS ADDED	M,T
04	12/02/19	TITLEBLOCK REVISED	M,T
03	10/03/17	OFFSET POST REVISED	L,L
02	01/02/17	DETAILS REVISED	L,L
1.3	20/05/15	DETAILS REVISED	M,T

MegaRail ec3.3 H1 W3 (VI4)

H1.W3 VEHICLE RESTRAINT SYSTEM COMPONENTS SCHEMATIC

SAFEROAD®

CONCORD HOUSE,
BESSEMER WAY, SCUNTHORPE,
NORTH LINCOLNSHIRE, DN15 8XE
t: 01724 289119

e: john.cudlipp@saferoad.co.uk

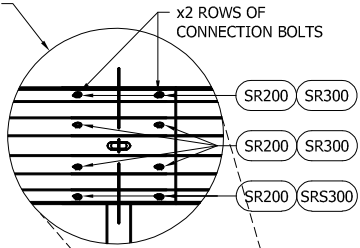
DRAWING NUMBER:

H1W3-GA-00

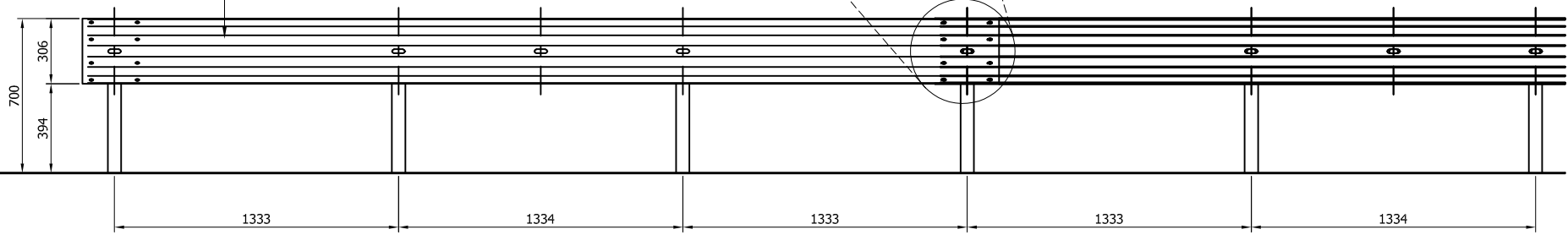
REV#:

05

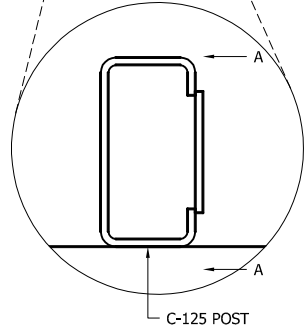
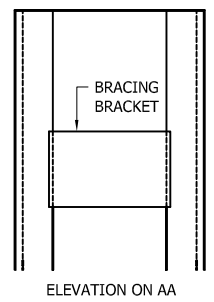
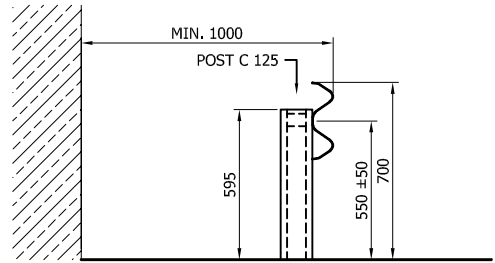
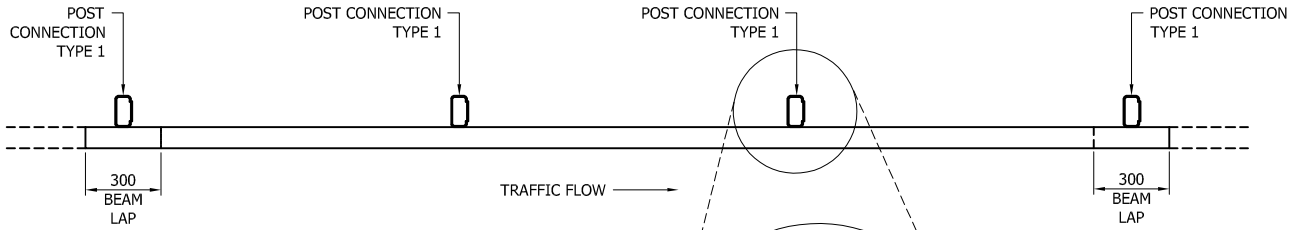
BEAM TO BEAM LAP CONNECTION
(1 No / 4m BEAM)



SR001
(CAN BE SUBSTITUTED BY SR028)



- GENERAL NOTES:**
1. POSTS ARE TO BE INSTALLED WITH THE CLOSED FACE OF THE CHANNEL TOWARDS THE ON-COMING TRAFFIC.
 2. FOR OPTIONS ON POST FOUNDATIONS REFER TO DRAWING NUMBER MR-GA-020
 3. WHEN TYING INTO ADJACENT VRS ONLY ONE WORKING WIDTH DIFFERENCE IS PERMITTED.
 5. WHERE A KERB IS PRESENT THE MAXIMUM KERB HEIGHT IS 100mm. SHOULD THE KERB BE HIGHER THAN 100mm AND THE FENCE IS SETBACK LESS THAN 250mm FROM THE FACE OF THE KERB. THE SYSTEM HEIGHT IS MEASURE FROM THE CARRIAGEWAY. IF THE SETBACK IS MORE THAN 250mm FROM THE FACE OF KERB THE SYSTEM HEIGHT IS MEASURED FROM THE TOP OF THE KERB.
 6. FOR MINIMUM LENGTH OF FULL HEIGHT VRS REFER TO SAFEROAD MEGARAIL MANUAL.
 7. FOR DEVIATIONS IN SYSTEM POST PITCH REFER TO DRAWING H1W4-GA-40.



**MegaRail ec3.3
H1 W3 (VI4)**

H1.W3 VEHICLE RESTRAINT SYSTEM
ASSEMBLY & SETTING OUT
ARRANGEMENT

SAFEROAD®

CONCORD HOUSE,
BESSEMER WAY, SCUNTHORPE,
NORTH LINCOLNSHIRE, DN15 8XE
t: 01724 289119
e: john.cudlipp@saferoad.co.uk

TABLE 'A' - SYSTEM COMPONENT SCHEDULE - QUANTITIES / 4m BEAM

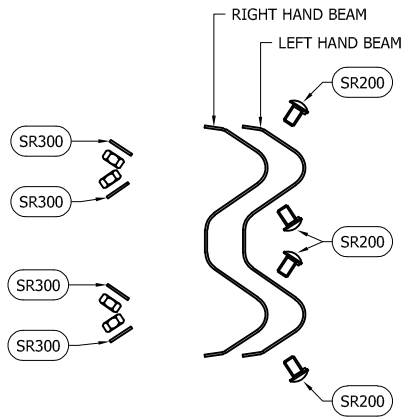
SAFEROAD UK PART NUMBER	DESCRIPTION	QUANTITY
SR001	BEAM "A" PROFILE (CAN BE SUBSTITUTED BY SR028)	1
SEE TABLE 'B'	POST "C" 125 c/w BRACKET	3
FOR SCHEDULE OF BOLTED CONNECTIONS REFER TO DRAWING NUMBER H1W3-GA-02		

TABLE 'B' - SCHEDULE OF POST REFERENCE NUMBERS AND LENGTHS

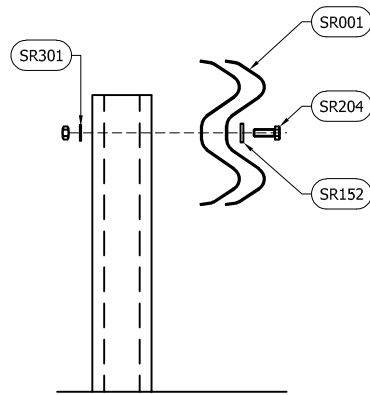
SAFEROAD UK PART NUMBER	POST LENGTH
SR049	1100
SR047	1800
SR048	2000
SR037	2400

REV#	DATE	DETAILS	INITIAL
04	19/11/19	BEAM DETAILS ADDED	M.T
03	12/02/19	TITLEBLOCK REVISED	M.T
02	01/02/17	DETAILS REVISED	L.L
1.3	20/05/15	DETAILS REVISED	M.T

DRAWING NUMBER: H1W3-GA-01	REV#: 04
--------------------------------------	--------------------



BEAM TO BEAM CONNECTION
ARRANGEMENT
(x2 LOCATIONS / BEAM END)



BEAM TO POST
CONNECTION TYPE 1

BOLTING COMPONENT SCHEDULE - QUANTITIES / BEAM		
SAFEROAD UK PART NUMBER	DESCRIPTION	BEAM TO BEAM CONNECTION
SR200	SETSCREW 4.6 LIP M16x27 c/w NUT	8 (+8)
SR300	WASHER M16 18φ HOLE	8 (+8)

** BEAM REFERENCES i.e. LEFT / RIGHT HAND ARE FOR VERGE INSTALLATIONS; FOR CENTRAL RESERVATION INSTALLATIONS THE REFERENCES ARE REVERSED

BOLTING COMPONENT SCHEDULE - QUANTITIES / POST		
SAFEROAD UK PART NUMBER	DESCRIPTION	TYPE 1 CONNECTION
SR204	SETSCREW 4.6 M10 x 45 c/w NUT	1
SR152	WASHER PLATE 115 x 40 x 5 DIA. 12	1
SR301	M10 WASHER 11φ HOLE	1
QUANTITY OF CONNECTION TYPES / 4m BEAM		
		3 (+1)

GENERAL NOTES:

1. NUMBERS IN THE SCHEDULES SUFFIXED (+) DENOTES THE ADDITIONAL QUANTITY OF COMPONENTS REQUIRED FOR EXTREME ENDS OF INDIVIDUAL RUNS OF BARRIER.
2. POST STRAPS ARE INTERCHANGEABLE BETWEEN VERGE & CENTRAL RESERVE.
3. USES THE STANDARD 3MM BEAM

REV#	DATE	DETAILS	INITIAL
03	12/02/19	DETAILS REVISED	M,T
02	01/02/17	DETAILS REVISED	L,L
1.3	20/05/15	NOTES REVISED	M,T

MegaRail ec3.3 H1 W3 (VI4)

H1.W3 VEHICLE RESTRAINT SYSTEM
BOLTING ARRANGEMENTS

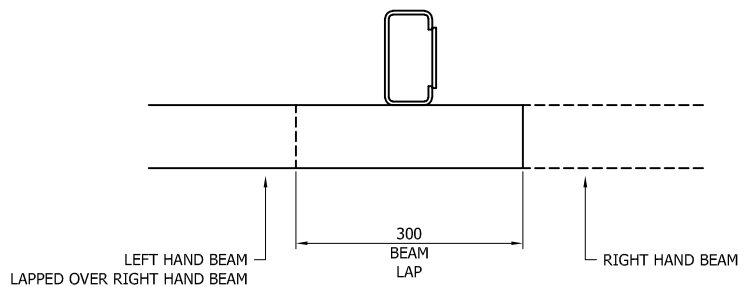
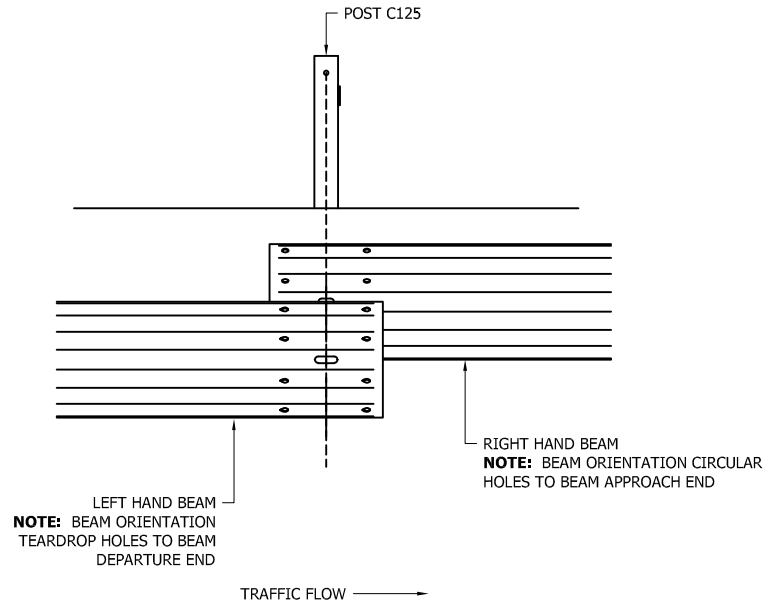
SAFEROAD®

CONCORD HOUSE,
BESSEMER WAY, SCUNTHORPE,
NORTH LINCOLNSHIRE, DN15 8XE
t: 01724 289119
e: john.cudlipp@saferoad.co.uk

DRAWING NUMBER:	REV#:
H1W3-GA-02	03

GENERAL NOTES:

1. POSTS ARE TO BE INSTALLED WITH THE CLOSED FACE OF THE CHANNEL TOWARDS THE ON-COMING TRAFFIC.



** BEAM REFERENCES i.e. LEFT / RIGHT HAND ARE FOR VERGE INSTALLATIONS; FOR CENTRAL RESERVATION INSTALLATIONS THE REFERENCES ARE REVERSED

REVn	DATE	DETAILS	INITIAL
03	12/02/19	TITLEBLOCK REVISED	M,T
02	01/02/17	DETAILS REVISED	L,L
1.3	20/05/15	REVn BOX ADDED	M,T

MegaRail ec3.3 H1 W3 (VI4)

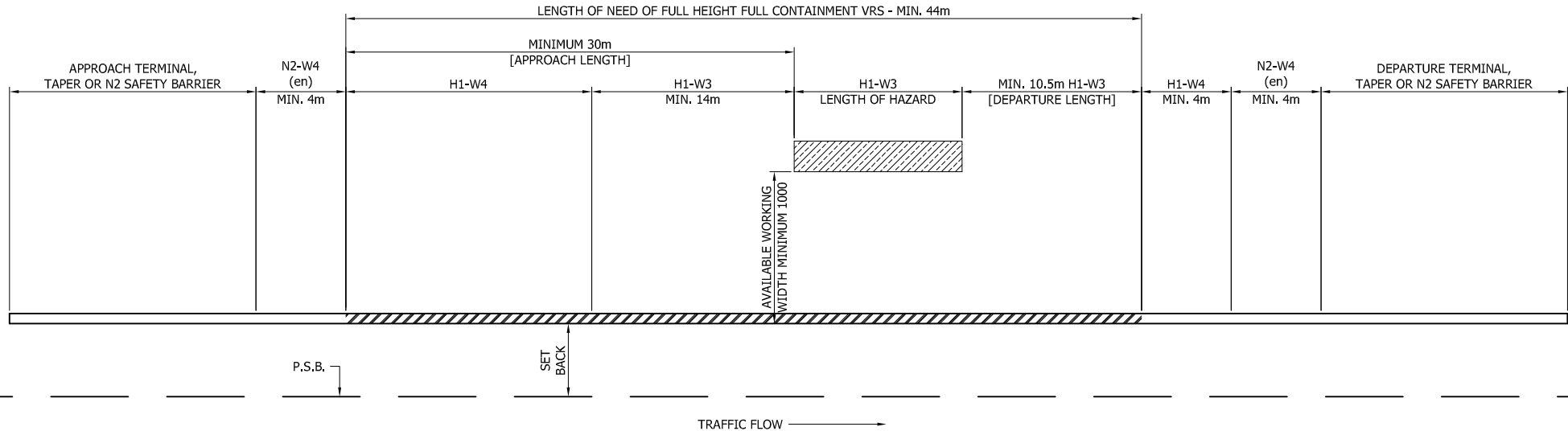
H1.W3 VEHICLE RESTRAINT SYSTEM
BEAM LAPPING DETAIL FOR H1 A W3
MEGARAIL SYSTEM

SAFEROAD®

CONCORD HOUSE,
BESSEMER WAY, SCUNTHORPE,
NORTH LINCOLNSHIRE, DN15 8XE
t: 01724 289119
e: john.cudlipp@saferoad.co.uk

DRAWING NUMBER: H1W3-GA-03	REVn: 03
--------------------------------------	--------------------

- GENERAL NOTES:
1. P.S.B. = POINT FROM WHERE SET-BACK IS MEASURED.
 2. POSTS ARE TO BE INSTALLED WITH THE CLOSED FACE OF THE CHANNEL TOWARDS THE ON-COMING TRAFFIC.
 3. MINIMUM LENGTH OF FULL HEIGHT VRS IS 44m



MegaRail ec3.3 H1 W3 (VI4)

H1.W3 VEHICLE RESTRAINT SYSTEM
SYSTEM PROGRESSION SCHEMATIC
FOR H1 W3 PROTECTION TO HAZARD

SAFEROAD®

CONCORD HOUSE,
BESSEMER WAY, SCUNTHORPE,
NORTH LINCOLNSHIRE, DN15 8XE
t: 01724 289119
e: john.cudlipp@saferoad.co.uk

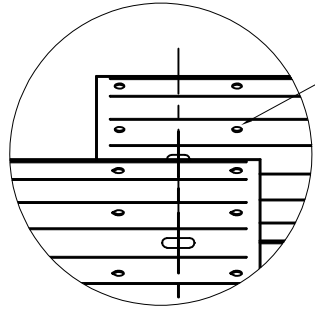
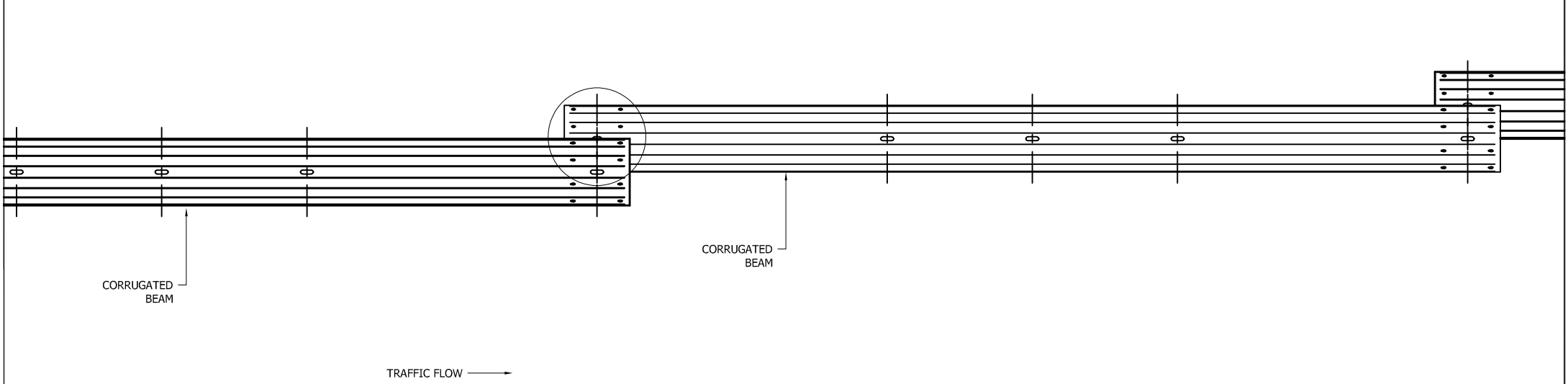
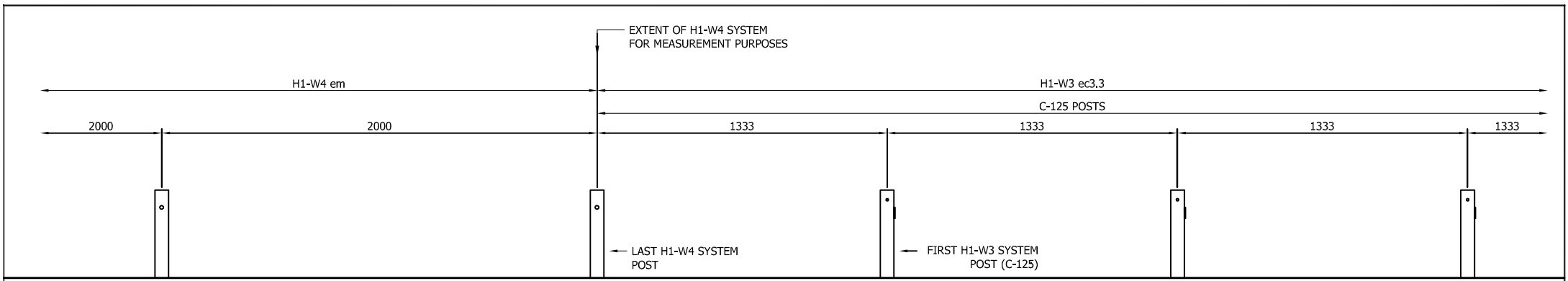
REV#	DATE	DETAILS	INITIAL
04	12/02/19	TITLEBLOCK REVISED	M.T
03	10/03/17	WORKING WIDTH REVISED	L.L
02	01/02/17	DETAILS REVISED	L.L
1.3	20/05/15	DETAILS REVISED	M.T

DRAWING NUMBER:

H1W3-GA-10

REV#:

04



NOTE: BEAM ORIENTATION CIRCULAR HOLES TO BEAM APPROACH END

GENERAL NOTES:
 1. POSTS ARE TO BE INSTALLED WITH THE CLOSED FACE OF THE CHANNEL TOWARDS THE ON-COMING TRAFFIC.

**MegaRail ec3.3
 H1 W3 (VI4)**
 VEHICLE RESTRAINT SYSTEM.
 SYSTEM PROGRESSION SCHEMATIC
 FOR W3 PROTECTION TO HAZARD

SAFEROAD®
 CONCORD HOUSE,
 BESSEMER WAY, SCUNTHORPE,
 NORTH LINCOLNSHIRE, DN15 8XE
 t: 01724 289119
 e: john.cudlipp@saferoad.co.uk

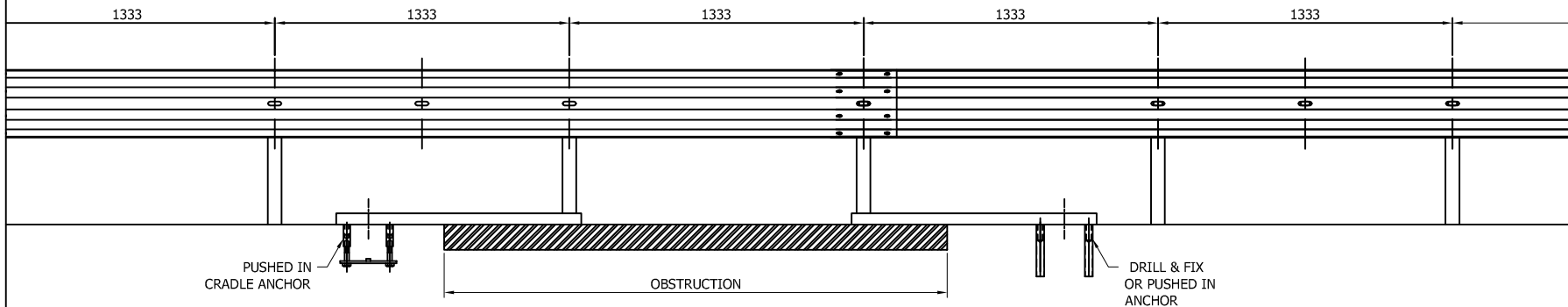
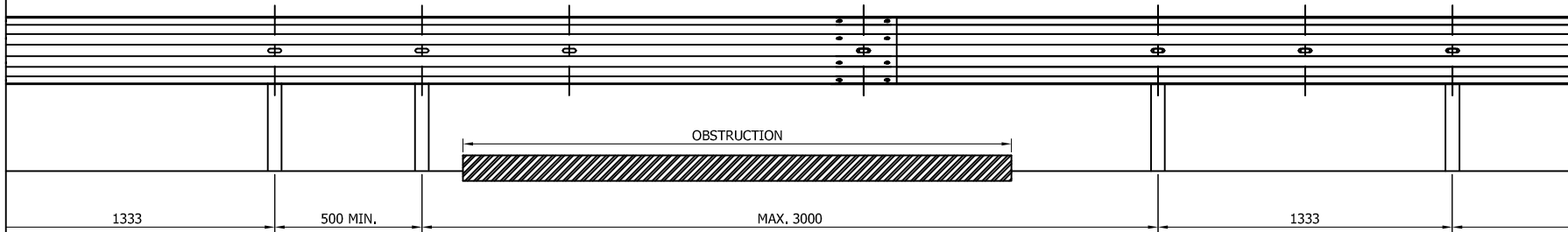
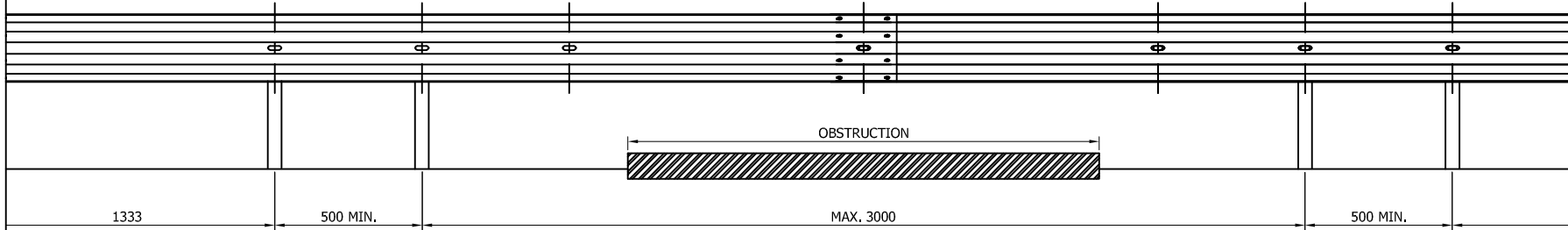
** BEAM REFERENCES I.e. LEFT / RIGHT HAND ARE FOR VERGE INSTALLATIONS; FOR CENTRAL RESERVATION INSTALLATIONS THE REFERENCES ARE REVERSED

01	12/02/19	TITLEBLOCK REVISED	M.T
00	01/02/17	NEW DRAWING	L.L
REVn	DATE	DETAILS	INITIAL

DRAWING NUMBER:	REVn:
H1W3-GA-20	01

GENERAL NOTES:

1. IF THE SITE CONDITIONS DO NOT ALLOW A POST TO BE INSTALLED ON THE SYSTEM PITCH DEVIATIONS CAN BE APPLIED. THE OBSTRUCTED POST CAN BE LEFT OUT AND EXTRA POSTS INSTALLED TO SPAN THE OBSTRUCTION. THE NEW POST SPACING MUST NOT EXCEED 3000mm AND MUST BE LESS THAN 500mm. ALTHOUGH IT WOULD BE BENEFICIAL TO USE THE HOLES ALREADY IN THE BEAM IT IS ACCEPTABLE TO DRILL NEW HOLES IN THE DESIRED POSITIONS AND TREAT WITH ZINC RICH PAINT.
2. OFFSET POSTS SHOWN ON DRAWING H1W3-GA-00 CAN BE USED.



REVn	DATE	DETAILS	INITIAL
03	12/02/19	TITLEBLOCK REVISED	M,T
02	17/10/18	DETAILS REVISED	M,T
01	10/03/17	NOTES REVISED	L,L
00	01/02/17	NEW DRAWING	L,L

MegaRail ec3.3 H1 W3 (VI4)

H1.W3 VEHICLE RESTRAINT SYSTEM
DEVIATION SETTING OUT
ARRANGEMENT

SAFEROAD®

CONCORD HOUSE,
BESSEMER WAY, SCUNTHORPE,
NORTH LINCOLNSHIRE, DN15 8XE
t: 01724 289119
e: john.cudlipp@saferoad.co.uk

DRAWING NUMBER:	REVn:
H1W3-GA-40	03