

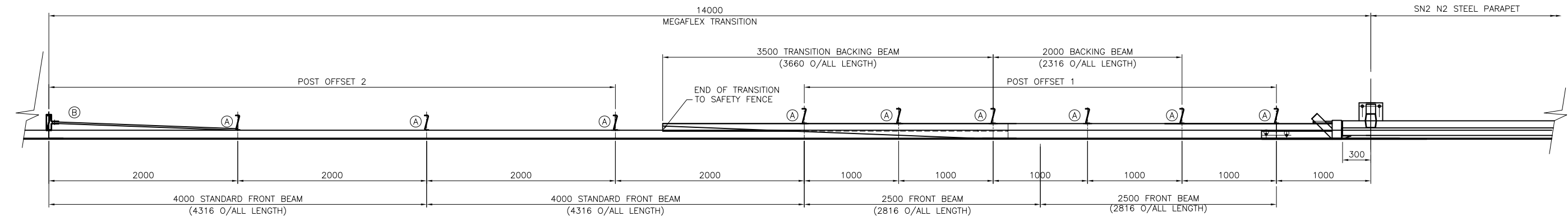
MACHINING NOTES
 MACHINE WHERE MARKED BY
 REMOVE SHARP EDGES
 TOLERANCES UNLESS
 STATED OTHERWISE
 DIMENSIONAL ± 0.010"(0.4mm)

FABRICATION NOTES
 TOLERANCES UNLESS
 STATED OTHERWISE
 ± 0.062"(1.6mm)

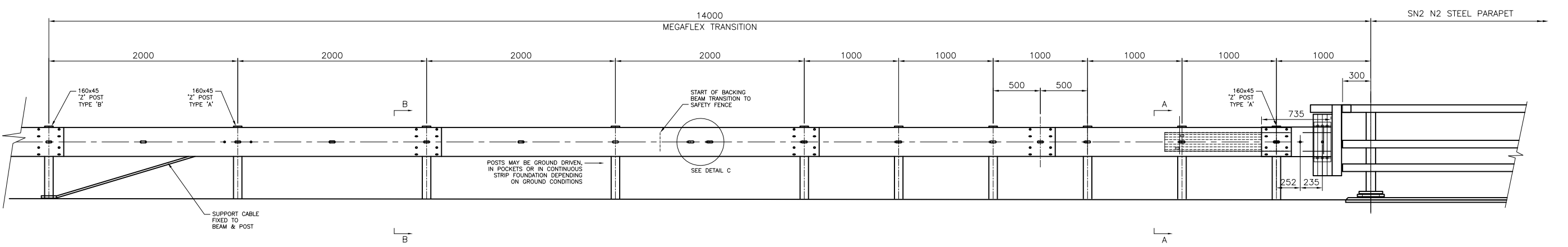
WELDING SPECIFICATION

IF IN DOUBT, ASK.

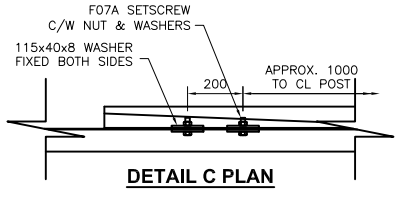
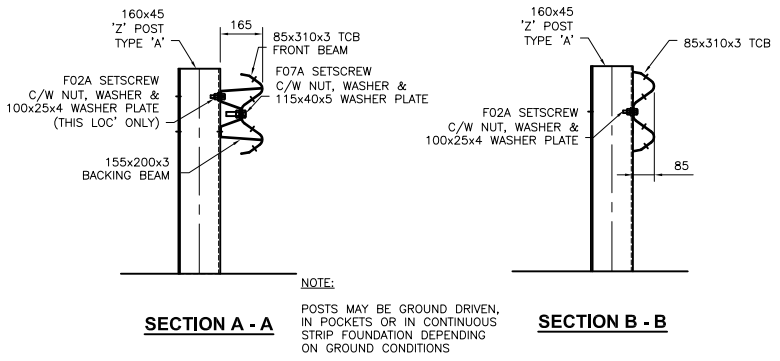
DRAWING NOT TO BE SCALED.



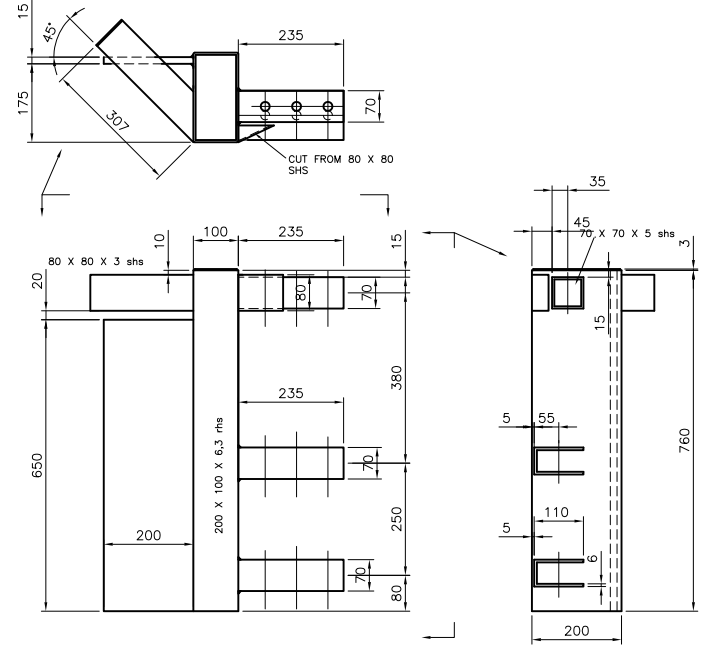
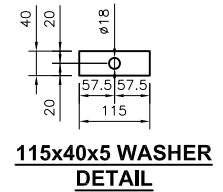
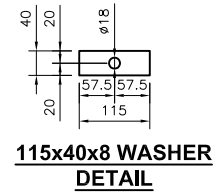
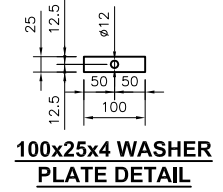
PLAN VIEW OF TRANSITION



ELEVATION ON TRAFFIC FACE OF TRANSITION



POST FACE OFFSETS FROM FACE OF BEAM		
OFFSET TYPE	OFFSET (mm)	
1	165	
2	85	



- GENERAL NOTES:**
- ALL DIMENSIONS IN MILLIMETRES UNLESS NOTED OTHERWISE.
 - FOR GENERAL ARRANGEMENT & DETAILS OF SN2 N2 STEEL PARAPET DRG. No SN2/GA-001 Rev. 04.
 - THE OVERALL LENGTH OF MEGAFLEX POSTS & SLOPE OF BEAM TO SUIT SITE GROUND GRADIENT.
 - MEGAFLEX POSTS TO BE DRIVEN OR SET IN SOCKETS, CAST INTO INDIVIDUAL FOUNDATIONS OR STRIP FOUNDATION.
 - STEEL COMPONENTS TO BS 10025, GRADE S275 AND GALVANISED TO BS EN 1461.
 - ALL FASTENERS TO LAP JOINTS TO BE TO M16x35 LG STEEL GRADE 8.8 GALVANISED SCREW (F07) UNLESS NOTED OTHERWISE.
 - CONNECTIONS TO ANY APPROACH OR DEPARTURE END OF THIS TRANSITION MUST ONLY BE MADE WITH THE EXPRESS PERMISSION OF SAFEROAD UK.

REV.	DATE	REMARKS	SIG.
01	27.02.13	Rebranded as MegaFlex & Rail Overhang dimension added	M.T

ORDER No:--	MATL:--	DRAWN:-- M. Teal	CHECKED:-- G.S	CHECKED QA:--
ISSUE DATE:--	PROJECTION:--	DATE:-- 30.08.11	SCALE:-- Not to Scale	APPROVED:--
		DRG NO:-- PA 17962		REV:-- 01

SAFEROAD
 UK LTD
 Dragonby Vale Enterprise Park
 Mannberg Way
 Scunthorpe
 North Lincolnshire, DN15 8XF
 Tel: 01724 269119 Fax: 01724 261478

TITLE:--
 Layout & General Details of MegaFlex Transition
 SN2 N2 Steel Parapet to MegaFlex Transition
 Approach End