

WELDING SYMBOLS

MACHINING NOTES

MACHINE WHERE MARKED BY REMOVE SHARP EDGES TOLERANCES UNLESS STATED OTHERWISE DIMENSIONAL ± 0.010"(0.4mm)

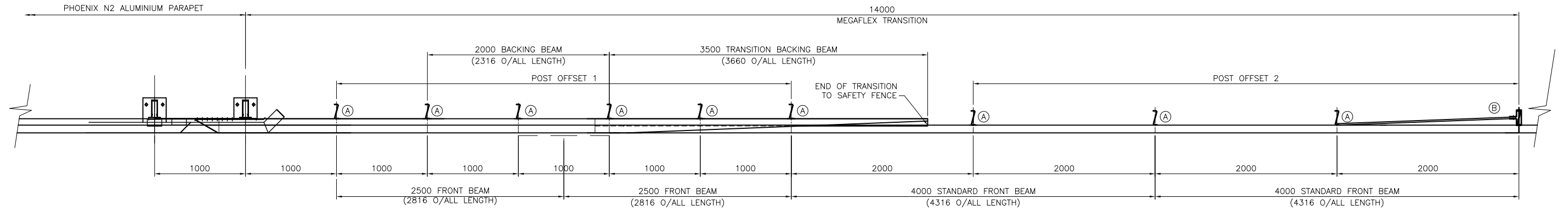
FABRICATION NOTES

TOLERANCES UNLESS STATED OTHERWISE ± 0.062"(1.6mm)

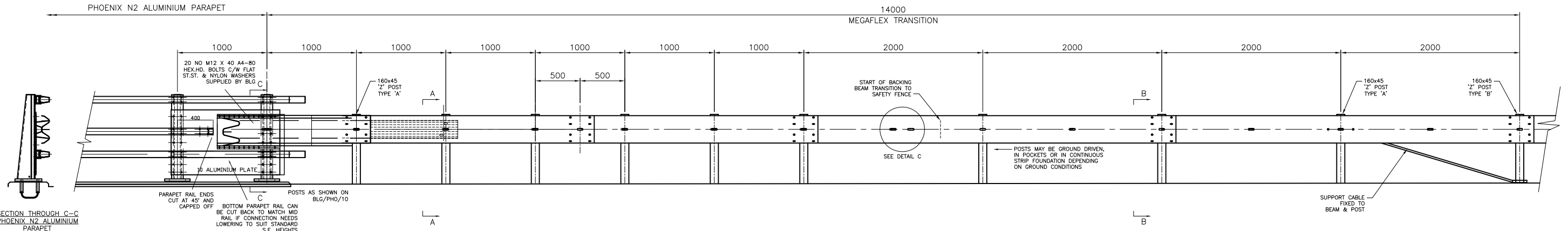
WELDING SPECIFICATION

IF IN DOUBT, ASK.

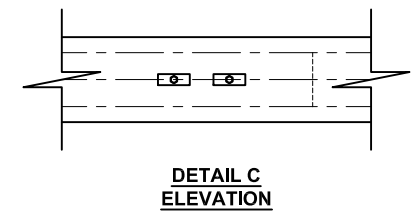
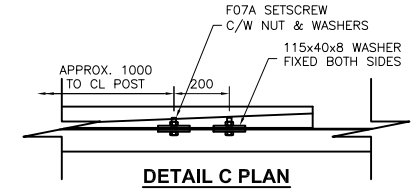
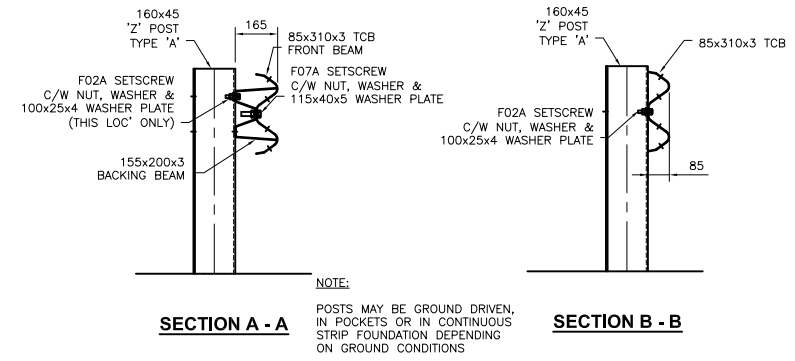
DRAWING NOT TO BE SCALED.



PLAN VIEW OF TRANSITION



ELEVATION ON TRAFFIC FACE OF TRANSITION

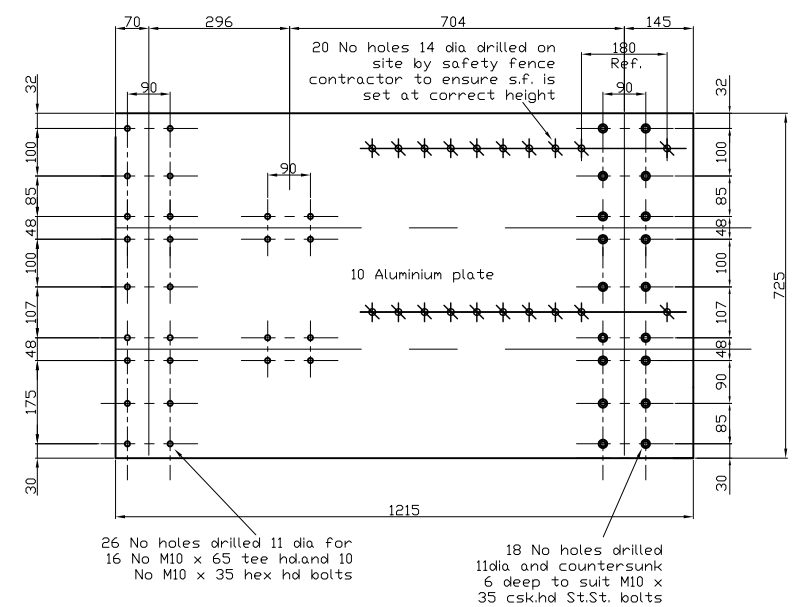


POST FACE OFFSETS FROM FACE OF BEAM	
OFFSET TYPE	OFFSET (mm)
1	165
2	85

100x25x4 WASHER PLATE DETAIL

115x40x8 WASHER DETAIL

115x40x5 WASHER DETAIL



CONNECTION PLATE TYPICAL DETAIL

- GENERAL NOTES:**
- ALL DIMENSIONS IN MILLIMETRES UNLESS NOTED OTHERWISE.
 - FOR GENERAL ARRANGEMENT & DETAILS OF N2 PHOENIX ALUMINIUM PARAPET SEE DRG. No. BLG/PHO/01 Rev. 01.
 - THE OVERALL LENGTH OF MEGAFLEX POSTS & SLOPE OF BEAM TO SUIT SITE GROUND GRADIENT.
 - MEGAFLEX POSTS TO BE DRIVEN OR SET IN SOCKETS, CAST INTO INDIVIDUAL FOUNDATIONS OR STRIP FOUNDATION.
 - STEEL COMPONENTS TO BS 10025, GRADE S275 AND GALVANISED TO BS EN 1461.
 - ALL FASTENERS TO LAP JOINTS TO BE TO M16x35 LG STEEL GRADE 8.8 GALVANISED SCREW (F07) UNLESS NOTED OTHERWISE.
 - CONNECTIONS TO ANY APPROACH OR DEPARTURE END OF THIS TRANSITION MUST ONLY BE MADE WITH THE EXPRESS PERMISSION OF SAFEROAD UK.

01	27.02.13	Rebranded as MegaFlex	M.T
REV.	DATE	REMARKS	SIG.

SAFEROAD
UK LTD
Dragonby Vale Enterprise Park
Mannberg Way
Scunthorpe
North Lincolnshire, DN15 8XF
Tel: 01724 289119 Fax: 01724 281478

TITLE:--
Layout & General Details of MegaFlex Transition
Phoenix N2 Aluminium Parapet to MegaFlex Transition
Departure End

ORDER No:--
ISSUE DATE:--

MATL:--
PROJECTION:--

DRAWN:--
DATE:--
DRG NO:--

CHECKED:--
SCALE:--
PA 17944

CHECKED QA:--
APPROVED:--
REV: 01